



15W SMD LED recessed downlight, budget range, IP20.

Complete with 280mA driver.

Complies with standard EN60598-1 and any other specific standards.



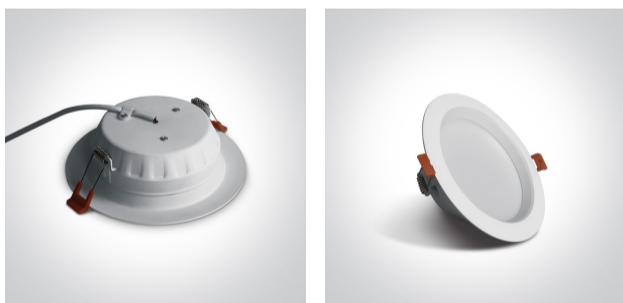
#### Downloads



#### Dimensions



#### Gallery



#### Physical Specification

Item Group

06 Downlights Fixed LED

Family

The Budget Downlight Range Aluminium

Order Code

10115T/W/C

Colour

White

Material

Aluminium

Shape



Circular


Height



43mm

|                      |       |
|----------------------|-------|
| Diameter             | 160mm |
| Cutout Hole Diameter | 130mm |
| Recessed Ceiling     | Yes   |
| Depth Required       | 60mm  |
| Indoor               | Yes   |
| Adjustable           | No    |


## Electrical Characteristics

| Gear             | External-Included   |
|------------------|---|
| Fitting + Driver |   |
| Input Voltage    | 220-240V  |
| 50 Hz            | Yes   |
| 60 Hz            | Yes   |
| Safety Class     |  |
| Power(Watts)     | 15W   |
| IP Rating        | IP20  |
| Light Source     | LED built in  |
| Dimmable         | No  |
| F Mark           |  |

| Fitting       |   |
|---------------|---|
| Input Type    | Constant Current  |
| Input Current | 280mA   |
| Voltage       | 45V   |
| Safety Class  |  |
| Power(Watts)  | 12,6W   |
| IP Rating     | IP20  |
| Light Source  | LED built in  |
| LED Type      | SMD 2835  |
| LED Brand     | Sanan   |

|                  |   |
|------------------|---|
| LED Number       | 30  |
| F Mark           |    |
| <b>Gear</b>      |   |
| Gear Type        | Led Driver  |
| Input Voltage    | 220-240V  |
| 50 Hz            | Yes   |
| 60 Hz            | Yes   |
| Power(Watts)     | 11,7-17,7W  |
| Power Factor     | 0,95  |
| Constant Current | Yes   |
| Output           | 280mA   |
| Voltage Range    | 42-63V  |
| IP Rating        | IP20  |
| Safety Class     |  |
| Dimmable         | No  |
| Housing Material | Plastic   |
| Output Terminal  | Cable   |
| Brand            | Kegu  |

### Illumination Data

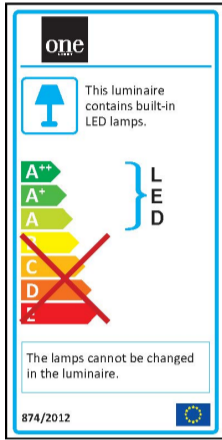
|                      |   |
|----------------------|---|
| Colour Temperature   | 4000K   |
| Lumen Output         | 1100lm  |
| Light Efficiency     | 73,33lm/W   |
| CRI                  | 80  |
| Beam Angle           | 120°  |
| Illumination Diagram |  |

### Packing Info

|            |      |
|------------|------|
| Box Length | 17cm |
|------------|------|

|            |               |
|------------|---------------|
| Box Width  | 17cm          |
| Box Height | 6cm           |
| Box Weight | 0,290kg       |
| Pcs/Carton | 30            |
| Barcode    | 5291889045793 |
| HS Code    | 9405409900    |

## Energy Label



## Certification & Warranty

|                |         |
|----------------|---------|
| Warranty       | 2 Years |
| Weee Directive | Yes     |