



20W SMD LED UGR19 downlight with adjustable CCT, IP44.

Complete with 550mA driver.

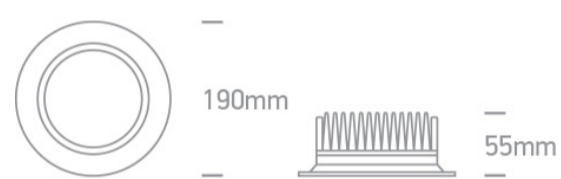
Complies with standard EN60598-1 and any other specific standards.



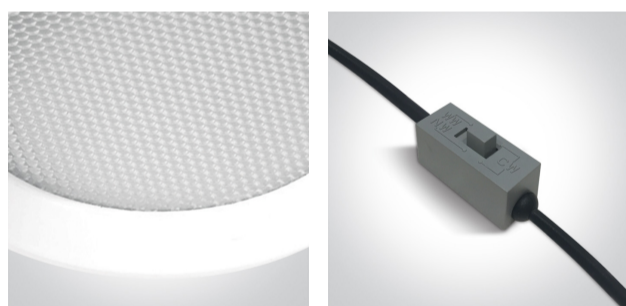
#### Downloads



#### Dimensions



#### Gallery






#### Physical Specification

|            |                            |
|------------|----------------------------|
| Item Group | 06 Downlights Fixed LED    |
| Family     | UGR19 Adjustable CCT Range |
| Order Code | 10120UV/W                  |
| Colour     | White                      |
| Material   | Die Cast                   |
| Shape      | Circular                   |
| Height     | 55mm                       |

|                      |       |
|----------------------|-------|
| Diameter             | 190mm |
| Cutout Hole Diameter | 170mm |
| Recessed Ceiling     | Yes   |
| Depth Required       | 75mm  |
| Indoor               | Yes   |
| Adjustable           | No    |

## Electrical Characteristics

| Gear             | External-Included   |
|------------------|---|
| Fitting + Driver |   |
| Input Voltage    | 220-240V  |
| 50 Hz            | Yes   |
| 60 Hz            | Yes   |
| Safety Class     |  |
| Power(Watts)     | 20W   |
| IP Rating        | IP44  |
| Light Source     | LED built in  |
| Dimmable         | No  |
| F Mark           |  |

| Fitting       |   |
|---------------|---|
| Input Type    | Constant Current  |
| Input Current | 550mA   |
| Voltage       | 36V   |
| Safety Class  |  |
| Power(Watts)  | 19,8W   |
| IP Rating     | IP44  |
| Light Source  | LED built in  |
| LED Type      | SMD 2835  |
| LED Brand     | Epistar   |

## Gear

Gear Type

Led Driver

Input Voltage

220-240V

50 Hz

Yes

60 Hz

Yes

Power(Watts)

13,75-22W

Power Factor

0,9

Constant Current

Yes

550mA

25-40V

IP Rating

IP44

Safety Class



Dimmable

No

Housing Material

Plastic

Output Terminal

Cable

Brand

Lifud

Protection

Short Circuit and Overload

## Illumination Data

Colour Temperature

3000K-4000K-6000K

Lumen Output

1500lm

Light Efficiency

75lm/W

CRI

80

Illumination Diagram



UGR

19

## Packing Info

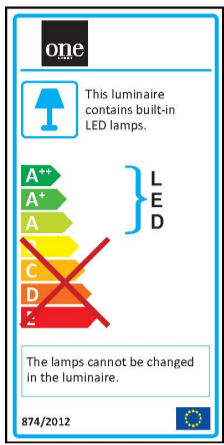
Pcs/Carton

20

Barcode

5291889065319

Energy Label



Certification & Warranty

Warranty

3 Years

Average Lifetime

30000hrs

Weee Directive

Yes