



30W COB LED project round range downlight, IP53.

Complete with 700mA dimmable driver.

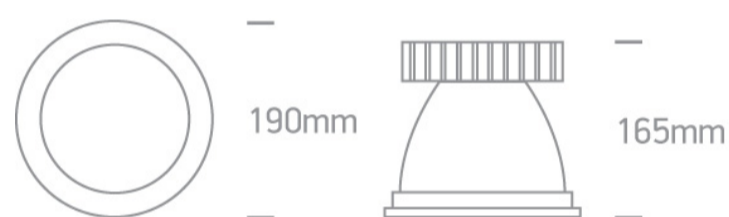
Complies with standard EN60598-1 and any other specific standards.



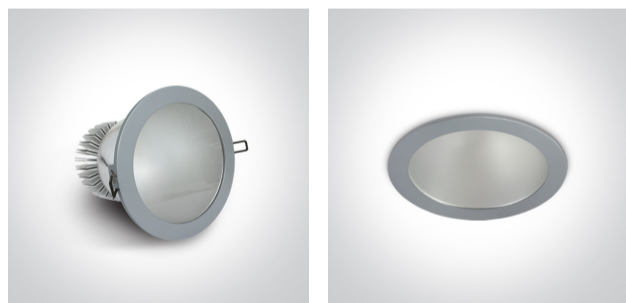
Downloads



Dimensions



Gallery






Physical Specification

Item Group	06 Downlights Fixed LED
Family	The COB Project Round Range Dimmable
Order Code	10130K/G/W
Colour	Grey
Material	Die Cast
Shape	Circular
Height	165mm

Diameter	190mm
Cutout Hole Diameter	175mm
Recessed Ceiling	Yes
Depth Required	195mm
Indoor	Yes
Adjustable	No

Electrical Characteristics

Gear	External-Included
Fitting + Driver	
Input Voltage	220-240V
50 Hz	Yes
60 Hz	Yes
Safety Class	
Power(Watts)	30W
IP Rating	IP53
Light Source	LED built in
Dimmable	Yes
Dimmer type	Triac
F Mark	

Fitting	
Input Type	Constant Current
Input Current	700mA
Voltage	36V
Safety Class	
Power(Watts)	25,2W
IP Rating	IP53
Light Source	LED built in
LED Brand	GH

Gear

Gear Type

Led Driver

Input Voltage

220-240V

50 Hz

Yes

60 Hz

Yes

Power(Watts)

24,5-29,4W

Power Factor

0,9

Constant Current

Yes

700mA

35-42V

IP Rating

IP20

Safety Class



Dimmable

No

Ambient Temp

40°C

Operating Temp

80°C

Housing Material

Plastic

Output Terminal

Cable

Illumination Data

Colour Temperature

3000K

Lumen Output

2000lm

Light Efficiency

66,67lm/W

CRI

80

Beam Angle

100°

Illumination Diagram



Packing Info

Box Length

20cm

Box Width

17,5cm

Box Height	20cm
Box Weight	1,4kg
Pcs/Carton	12
Barcode	5291889028222
HS Code	9405409900

Energy Label



Certification & Warranty

Warranty	2 Years
Weee Directive	Yes