



10W COB LED extractable fitting with great flexibility on movement. Ideal for shops.

Supplied with non-dimmable LED driver.

Complies with standard EN60598-1 and any other specific standards.



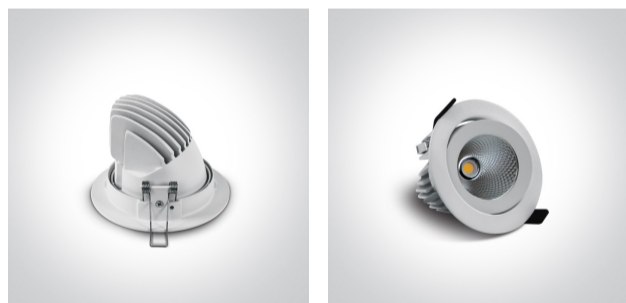
Downloads



Dimensions



Gallery






Physical Specification


Item Group	08 Downlights Adjustable LED
Family	The COB Extractable Range
Order Code	11110F/W/C
Colour	White
Material	Die Cast
Shape	Circular
Height	76mm

Diameter	108mm
Cutout Hole Diameter	90mm
Recessed Ceiling	Yes
Depth Required	105mm
Indoor	Yes
Adjustable	2 Directions


Electrical Characteristics

Gear	External-Included
Fitting + Driver	
Input Voltage	220-240V
50 Hz	Yes
60 Hz	Yes
Safety Class	
Power(Watts)	10W
IP Rating	IP20
Light Source	LED built in
Dimmable	No
F Mark	

Fitting	
Input Type	Constant Current
Input Current	200mA
Voltage	37,3V
Safety Class	
Power(Watts)	7,5W
IP Rating	IP20
Light Source	LED built in
LED Type	COB

LED Brand	Citizen
Gear	
Gear Type	Led Driver
Input Voltage	220-240V
50 Hz	Yes
60 Hz	Yes
Power(Watts)	5,4-8,4W
Power Factor	0,9
Constant Current	Yes
200mA	27-42V
IP Rating	IP20
Safety Class	
Dimmable	No
Housing Material	Plastic
Brand	Eaglerise

Illumination Data

Colour Temperature	4000K
Lumen Output	800lm
Light Efficiency	80lm/W
CRI	80
Beam Angle	36°
Illumination Diagram	

Packing Info

Box Length	11,5cm
Box Width	11,5cm
Box Height	11cm
Box Weight	0,43kg

Pcs/Carton

36

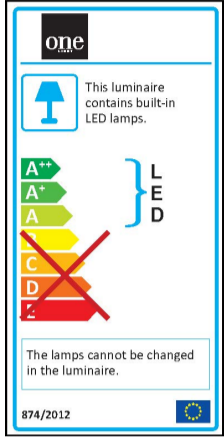
Barcode

5291889044840

HS Code

9405409900

Energy Label



Certification & Warranty

Warranty

3 Years

Weee Directive

Yes