



10W COB LED extractable fitting with great flexibility on movement. Ideal for shops.

Supplied with non-dimmable LED driver.

Complies with standard EN60598-1 and any other specific standards.



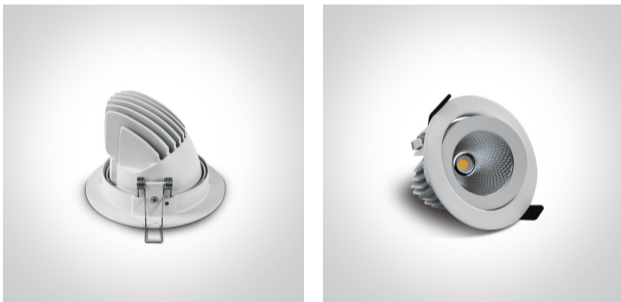
### Downloads



### Dimensions



### Gallery



### Physical Specification

Item Group

08 Downlights Adjustable LED

Family

The COB Extractable Range

Order Code

11110F/W/W

Colour

White

Material

Die Cast

Shape



Circular


Height


76mm

Diameter	108mm
Cutout Hole Diameter	90mm
Recessed Ceiling	Yes
Depth Required	105mm
Indoor	Yes
Adjustable	2 Directions


## Electrical Characteristics

Gear	External-Included
Fitting + Driver	
Input Voltage	220-240V
50 Hz	Yes
60 Hz	Yes
Safety Class	
Power(Watts)	10W
IP Rating	IP20
Light Source	LED built in
Dimmable	No
F Mark	

Fitting	
Input Type	Constant Current
Input Current	200mA
Voltage	37,3V
Safety Class	
Power(Watts)	7,5W
IP Rating	IP20
Light Source	LED built in
LED Type	COB

LED Brand	Citizen
Gear	
Gear Type	Led Driver
Input Voltage	220-240V
50 Hz	Yes
60 Hz	Yes
Power(Watts)	5,4-8,4W
Power Factor	0,9
Constant Current	Yes
200mA	27-42V
IP Rating	IP20
Safety Class	
Dimmable	No
Housing Material	Plastic
Brand	Eaglerise

#### Illumination Data

Colour Temperature	3000K
Lumen Output	770lm
Light Efficiency	77lm/W
CRI	80
Beam Angle	36°
Illumination Diagram	

#### Packing Info

Box Length	11,5cm
Box Width	11,5cm
Box Height	11cm
Box Weight	0,43kg

Pcs/Carton

36

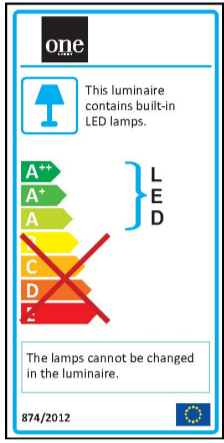
Barcode

5291889044857

HS Code

9405409900

## Energy Label



## Certification & Warranty

Warranty

3 Years

Weee Directive

Yes