



22W COB LED Cylinder CRI 90 with exchangeable reflectors .

Reflector must be order separately.
Complete with non-dimmable LED driver.

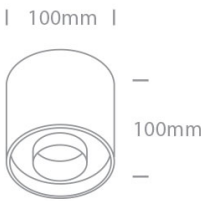
Complies with standard EN60598-1 and any other specific standards.



Downloads



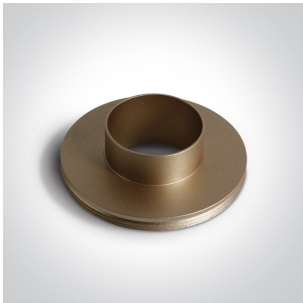
Dimensions



Must be ordered separately



050208/B



050208/BS





050208/W

Physical Specification

Item Group	New 2021 Edition 2
Family	Wall & Ceiling LED
Order Code	12122D/B/W
Colour	Black
Material	Aluminium
Shape	Circular

Height	100mm
Diameter	100mm
Surface Ceiling	Yes
Indoor	Yes
Adjustable	No


Electrical Characteristics

Gear	Built In
Fitting + Driver	
Input Voltage	220-240V
50 Hz	Yes
60 Hz	Yes
Safety Class	
Power(Watts)	22W
IP Rating	IP20
Light Source	LED built in
Dimmable	No
F Mark	

Fitting	
Input Type	Constant Current
Input Current	500mA
Voltage	38,4V
Power(Watts)	19,2W
IP Rating	IP20
Light Source	LED built in
LED Type	COB
LED Brand	Cree

Gear

Gear Type
Input Voltage
50 Hz
60 Hz
Power(Watts)
Power Factor
Constant Current
500mA
IP Rating
Safety Class
Dimmable
Housing Material
Brand

Led Driver
220-240V
Yes
Yes
13,5-20W
0,9
Yes
27-40V
IP20

No
Plastic
KEGU

Illumination Data

Colour Temperature
Lumen Output
Light Efficiency
CRI
Beam Angle
Illumination Diagram
Dark Light

3000K
1540lm
70lm/W
90
24°

Yes

Packing Info

Box Length
Box Width
Box Height
Pcs/Carton
Barcode
HS Code

10,5cm
10,5cm
11cm
20
5291889069591
9405409900

Warranty

3 Years

Weee Directive

Yes