

3-Phase 16A rounded track for commercial applications.

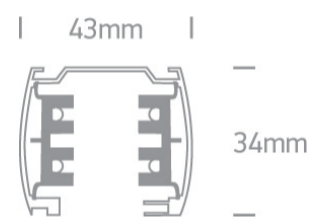
Complies with standard EN60598-1 and any other specific standards.

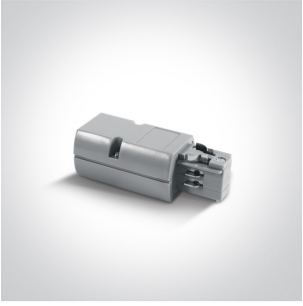


## Downloads

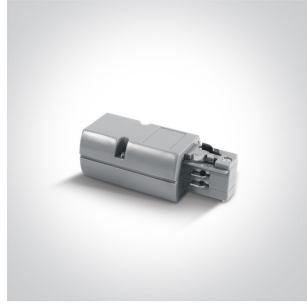


## Dimensions





41004/G/L



41004/G/L



41008/G



41008/G



41010/G



41010/G



41012/G/L



41012/G/L



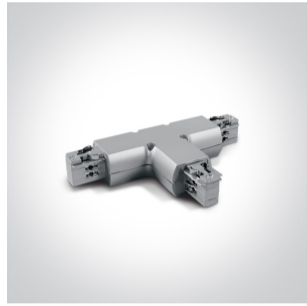
41012/G/R



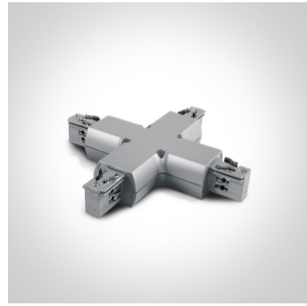
41012/G/R



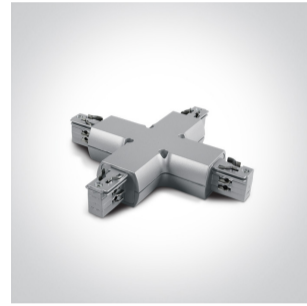
41016/G



41016/G



41018/G



41018/G



41020/G

## Physical Specification

|                   |                             |
|-------------------|-----------------------------|
| Item Group        | 10 Tracks & Magnetic        |
| Family            | Rounded Track & Accessories |
| Order Code        | 40003/G                     |
| Colour            | Grey                        |
| Material          | Aluminium                   |
| Shape             | Rectangular                 |
| Length            | 3000mm                      |
| Width             | 43mm                        |
| Height            | 34mm                        |
| Surface Ceiling   | Yes                         |
| Suspended Ceiling | Yes                         |
| Indoor            | Yes                         |
| Adjustable        | No                          |

## Packing Info

|            |               |
|------------|---------------|
| Box Weight | 2,8kg         |
| Pcs/Carton | 10            |
| Barcode    | 5291889004028 |
| HS Code    | 9405990090    |

## Certification & Warranty

|          |         |
|----------|---------|
| Warranty | 5 Years |
|----------|---------|

