

IP44 Bathroom Recessed MR16 spot with GU5,3 lampholder.

Complies with standard EN60598-1 and any other specific standards.



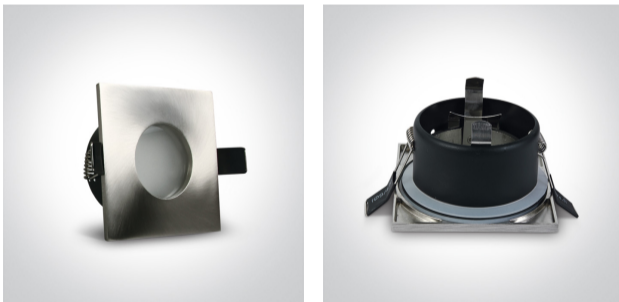
Downloads



Dimensions



Gallery



Physical Specification

Item Group

01 Recessed Spots Fixed

Family

The Bathroom Range IP44 Die Cast

Order Code

50105R/MC

Colour

Brushed Chrome

Material

Die Cast

Shape

Rectangular


Length

85mm

Width	85mm
Height	50mm
Cutout Hole Diameter	70mm
Recessed Ceiling	Yes
Depth Required	100mm
Indoor	Yes
Adjustable	No

Electrical Characteristics

Fitting

Input Type	Constant Voltage
Input Voltage	12V AC/DC
Safety Class	
Power(Watts)	50W
IP Rating	IP44
Light Source	Replaceable lamp
Lamp Holder	GU5.3
Number of Lamps	1
Cable Length	40cm

Illumination Data

Illumination Diagram



Packing Info

Box Length	11,5cm
Box Width	9,5cm
Box Height	7cm
Box Weight	0,194kg
Pcs/Carton	50

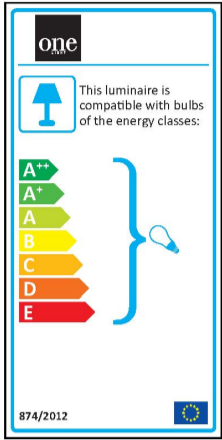
Barcode

5291889021667

HS Code

9405409900

Energy Label



Certification & Warranty

Warranty

5 Years

Weee Directive

Yes