

IP44 Bathroom Recessed MR16 spot with GU5,3 lampholder.

Complies with standard EN60598-1 and any other specific standards.



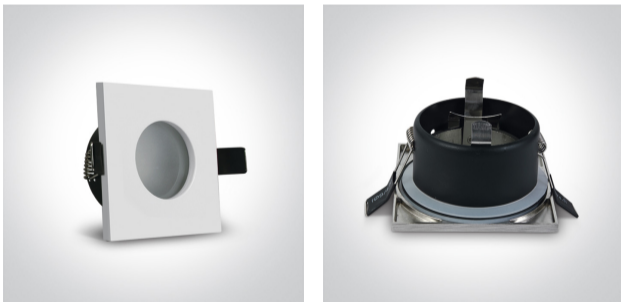
#### Downloads



#### Dimensions



#### Gallery



#### Physical Specification

Item Group

01 Recessed Spots Fixed

Family

The Bathroom Range IP44 Die Cast

Order Code

50105R/W

Colour

White

Material

Die Cast

Shape

Rectangular


Length

85mm

|                      |       |
|----------------------|-------|
| Width                | 85mm  |
| Height               | 50mm  |
| Cutout Hole Diameter | 70mm  |
| Recessed Ceiling     | Yes   |
| Depth Required       | 100mm |
| Indoor               | Yes   |
| Adjustable           | No    |

## Electrical Characteristics

### Fitting

|                 |   |
|-----------------|---|
| Input Type      | Constant Voltage  |
| Input Voltage   | 12V AC/DC   |
| Safety Class    |  |
| Power(Watts)    | 50W   |
| IP Rating       | IP44  |
| Light Source    | Replaceable lamp  |
| Lamp Holder     | GU5.3   |
| Number of Lamps | 1   |
| Cable Length    | 40cm  |

## Illumination Data

Illumination Diagram



## Packing Info

|            |         |
|------------|---------|
| Box Length | 11,5cm  |
| Box Width  | 9,5cm   |
| Box Height | 7cm     |
| Box Weight | 0,194kg |
| Pcs/Carton | 50      |

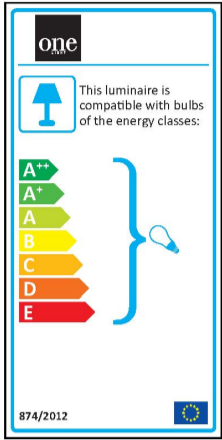
Barcode

5291889021650

HS Code

9405409900

## Energy Label



## Certification & Warranty

Warranty

5 Years

Weee Directive

Yes