



Recessed adjustable MR16 spot with GU5.3 lampholder.

Complies with standard EN60598-1 and any other specific standards.



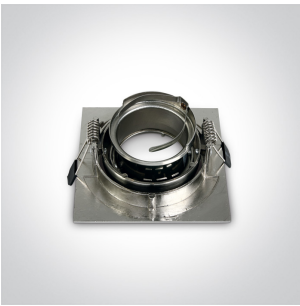
Downloads



Dimensions



Gallery




Physical Specification		
Item Group	03 Recessed Spots Adjustable	
Family	The Lock Ring Dark Light	
Order Code	51105CD/MC	
Colour	Brushed Chrome	
Material	Die Cast	
Shape	Circular	
Height	45mm	


Diameter	94mm
Cutout Hole Diameter	85mm
Recessed Ceiling	Yes
Depth Required	100mm
Indoor	Yes
Adjustable	1 Direction

Electrical Characteristics

Fitting

Input Type	Constant Voltage
Input Voltage	12V AC/DC
Safety Class	
Power(Watts)	50W
IP Rating	IP20
Light Source	Replaceable lamp
Lamp Holder	GU5.3
Number of Lamps	1
Cable Length	40cm

Illumination Data

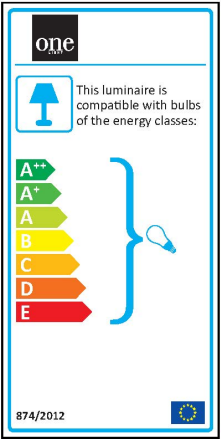
Illumination Diagram	
Dark Light	Yes

Packing Info

Box Length	10cm
Box Width	10cm
Box Height	5cm
Box Weight	0,113kg
Pcs/Carton	50

Barcode	5291889029014
HS Code	9405409900

Energy Label



Certification & Warranty

Warranty	5 Years
Weee Directive	Yes