

Dark Light Recessed Square adjustable MR16 Swivel spot with GU10 lampholder.

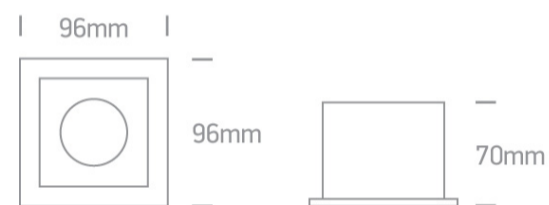
Complies with standard EN60598-1 and any other specific standards.



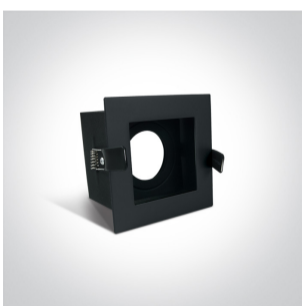
Downloads



Dimensions



Gallery



Physical Specification

Item Group

03 Recessed Spots Adjustable

Family

The Dark Light Range Metal

Order Code

51105TA/B

Colour

Black

Material

Metal

Shape



Rectangular

Length

96mm

Width	96mm
Height	70mm
Cutout Hole Width	80mm
Cutout Hole Length	80mm
Recessed Ceiling	Yes
Depth Required	150mm
Indoor	Yes
Adjustable	1 Direction

Electrical Characteristics

Gear	No
Fitting + Driver	
Input Voltage	100-240V
50 Hz	Yes
60 Hz	Yes
Safety Class	
Power(Watts)	10W
IP Rating	IP20
Light Source	Replaceable lamp
Lamp Holder	GU10
Number of Lamps	1
Dimmable	N/A
Cable Length	15cm
F Mark	

Illumination Data

Illumination Diagram	
Dark Light	Yes

Packing Info

Box Length	10,5cm
Box Width	10,5cm
Box Height	9,5cm
Box Weight	0,340kg
Pcs/Carton	36
Barcode	5291889052562
HS Code	9405409900

Certification & Warranty

Warranty	5 Years
Weee Directive	Yes