

Recessed adjustable R111 trimless shop range with GU10 lampholder.

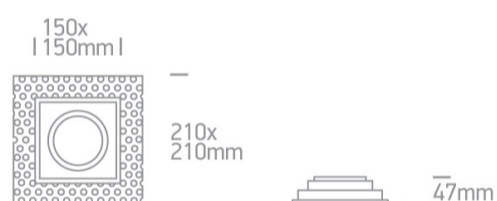
Complies with standard EN60598-1 and any other specific standards.



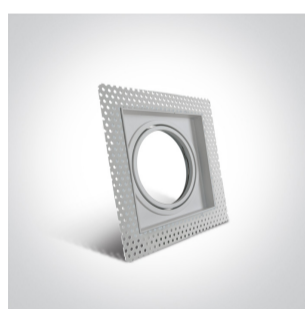
Downloads



Dimensions



Gallery



Physical Specification

Item Group

07 Downlights Adjustable

Family

The R111 Trimless Shop Range Die cast

Order Code

51110ATR/W

Colour

White

Material

Die Cast

Shape



Rectangular

Length

210mm

Width	210mm
Height	47mm
Cutout Hole Width	170mm
Cutout Hole Length	170mm
Recessed Ceiling	Yes
Depth Required	150mm
Indoor	Yes
Adjustable	2 Directions

Electrical Characteristics

Gear	No
Fitting + Driver	
Input Voltage	100-240V
50 Hz	Yes
60 Hz	Yes
Safety Class	
Power(Watts)	75W
IP Rating	IP20
Light Source	Replaceable lamp
Lamp Holder	GU10
Number of Lamps	1
Dimmable	N/A
Cable Length	20cm
F Mark	

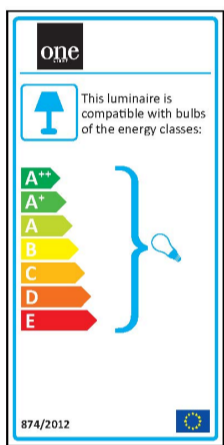
Illumination Data

Illumination Diagram	
----------------------	---

Packing Info

Box Length	21,5cm
Box Width	21,5cm
Box Height	7cm
Box Weight	0,75Kg
Pcs/Carton	10
Carton Length	45cm
Carton Width	23cm
Carton Height	38cm
Carton Weight	7,7Kg
Barcode	5291889057222
HS Code	9405409900

Energy Label



Certification & Warranty

Warranty	5 Years
Weee Directive	Yes