



50W GU10 R111 Track Spot Range .

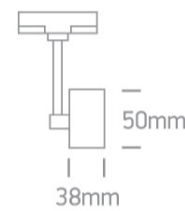
Complies with standard EN60598-1 and any other specific standards.



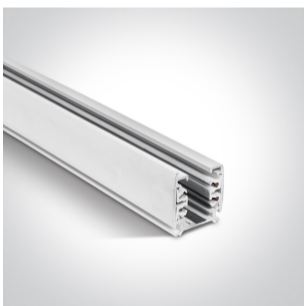
Downloads



Dimensions



Related items



40002A/W



40003A/W

Physical Specification

Item Group

10 Track Spots

Family

The GU10 Track Spot Die cast

Order Code

65118AT/W

Colour

White

Material

Die Cast

Shape

Circular

Height



38mm

Diameter	50mm
Track mounted	Yes
Indoor	Yes
Adjustable	2 Directions

Electrical Characteristics

Gear	No
------	----

Fitting + Driver

Input Voltage	100-240V
50 Hz	Yes
60 Hz	Yes
Safety Class	
Power(Watts)	50W
IP Rating	IP20
Light Source	Replaceable lamp
Lamp Holder	GU10
Number of Lamps	1
Dimmable	N/A
F Mark	

Illumination Data

Illumination Diagram	
----------------------	---

Packing Info

Box Length	12cm
Box Width	5cm
Box Height	15cm
Box Weight	0,22Kg
Pcs/Carton	40

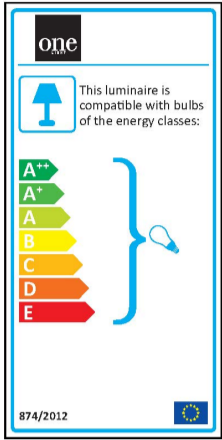
Barcode

5291889023968

HS Code

9405409900

Energy Label



Certification & Warranty

Warranty

5 Years

Weee Directive

Yes