



10W COB LED cylinder, IP54, suitable for indoor and outdoor installation.

Complete with non-dimmable LED driver.

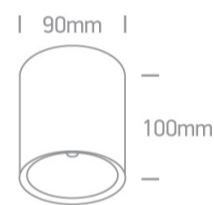
Complies with standard EN60598-1 and any other specific standards.



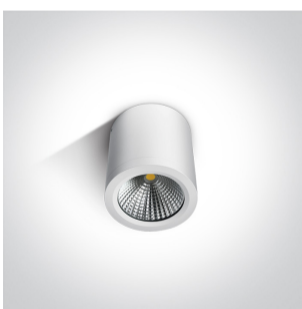
Downloads



Dimensions



Gallery



Physical Specification

Item Group

14 Wall & Ceiling LED

Family

COB Outdoor Ceiling Cylinders

Order Code

67380/W/W

Colour

White

Material

Aluminium

Shape

Circular

Height

100mm

Diameter	90mm
Surface Ceiling	Yes
Indoor	Yes
Outdoor	Yes

Electrical Characteristics

Gear	Built In
------	----------

Fitting + Driver


Input Voltage	220-240V
50 Hz	Yes
60 Hz	Yes
Safety Class	
Power(Watts)	10W
IP Rating	IP54
Light Source	LED built in
Dimmable	No
F Mark	

Fitting

Input Type	Constant Current
Input Current	250mA
Voltage	38V
Power(Watts)	9,5W
IP Rating	IP54
Light Source	LED built in
LED Type	COB
LED Brand	Citizen

Gear

Gear Type	Led Driver
-----------	------------

Input Voltage	220-240V
50 Hz	Yes
60 Hz	Yes
Power(Watts)	7.5-10W
Power Factor	0,9
Constant Current	Yes
250mA	30-40V
IP Rating	IP20
Safety Class	
Dimmable	No
Ambient Temp	45°C
Operating Temp	70°C
Housing Material	Plastic

Illumination Data

Colour Temperature	3000K
Lumen Output	700lm
Light Efficiency	70lm/W
CRI	80
Beam Angle	60°
Illumination Diagram	

Packing Info

Box Length	12cm
Box Width	12cm
Box Height	13cm
Pcs/Carton	24
Barcode	5291889044970
HS Code	9405409900

Warranty

2 Years

Weee Directive

Yes
