

20W COB LED inground with removable honeycomb, IP67, stainless steel 316, for path illumination.

AC LED .

Complies with standard EN60598-1 and any other specific standards.



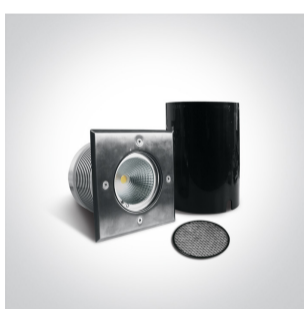
Downloads



Dimensions



Gallery





Physical Specification

Item Group	19 Wall Recessed & Inground
Family	The COB Inground Range
Order Code	69050A/W
Colour	Stainless Steel
Material	Stainless Steel 316
Diffuser Material	Glass
Shape	Rectangular

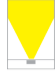
Length	145mm
Width	145mm
Height	140mm
Cutout Hole Diameter	132mm
Inground	Yes
Depth Required	200mm+300mm drainage
Indoor	Yes
Outdoor	Yes
Adjustable	No
IK Rating	10

Electrical Characteristics

Gear	No
Fitting + Driver	
Input Voltage	100-240V
50 Hz	Yes
60 Hz	Yes
Safety Class	
Power(Watts)	20W
IP Rating	IP67
Light Source	LED built in
Dimmable	Yes
Dimmer type	Triac
Cable Length	200cm
F Mark	

Illumination Data

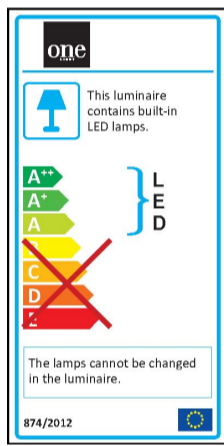
Colour Temperature	3000K
Lumen Output	1800lm

Light Efficiency	90lm/W
CRI	80
Beam Angle	25°
Illumination Diagram	

Packing Info

Pcs/Carton	6
Barcode	5291889055921
HS Code	9405409900

Energy Label



Certification & Warranty

Warranty	2 Years
Weee Directive	Yes