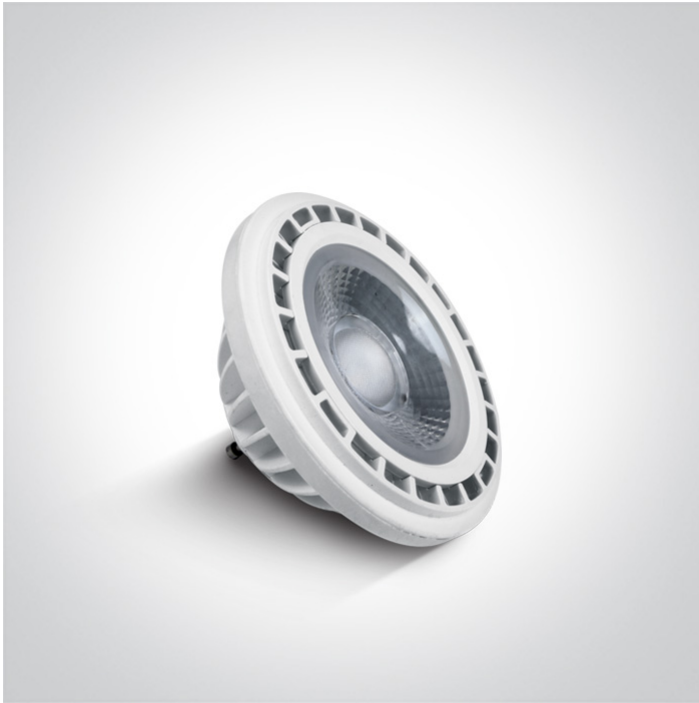


25 Lamps>R111 GU10 LED

7315G/C/45



R111 SMD LED GU10 13W 230V AC lamp, with very low energy consumption, no mercury content and no UV or IR radiation in the light beam. It can be used as an alternative to halogen.

Suitable for residential and commercial applications.

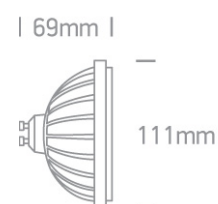
Complies with standard EN62560 and any other specific standards.



Downloads



Dimensions



Physical Specification

| | |
|------------|---------------|
| Item Group | 25 Lamps |
| Family | R111 GU10 LED |
| Order Code | 7315G/C/45 |
| Shape | Circular |
| Height | 69mm |
| Diameter | 111mm |

Electrical Characteristics


| | |
|------|----|
| Gear | No |
|------|----|

Lamp

| | |
|------------|---------------|
| Input Type | Mains Voltage |
|------------|---------------|

| | |
|---------------|----------|
| Input Voltage | 220-240V |
| 50 Hz | Yes |
| 60 Hz | Yes |
| Power(Watts) | 13W |
| Lamp Type | LED |
| Lamp Holder | GU10 |
| LED Type | SMD 2835 |
| LED Brand | Epistar |
| Dimmable | No |

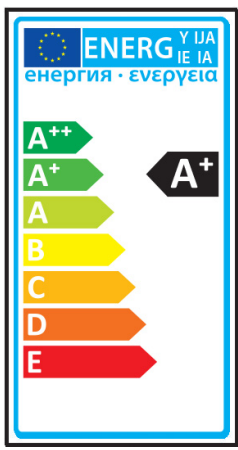
Illumination Data

| | |
|----------------------|---|
| Colour Temperature | 4000K |
| Lumen Output | 1200lm |
| Light Efficiency | 92,3lm/W |
| CRI | 80 |
| Beam Angle | 45° |
| Illumination Diagram |  |

Packing Info

| | |
|------------|---------------|
| Box Length | 11,5cm |
| Box Width | 9cm |
| Box Height | 9cm |
| Box Weight | 0,270Kg |
| Pcs/Carton | 20 |
| Barcode | 5291889032274 |
| HS Code | 8539500000 |

Energy Label



Energy Consumption

13kWh/1000h

Certification & Warranty

Warranty

2 Years

Average Lifetime

25000hrs

Switching Cycles

50000

Weee Directive

Yes
