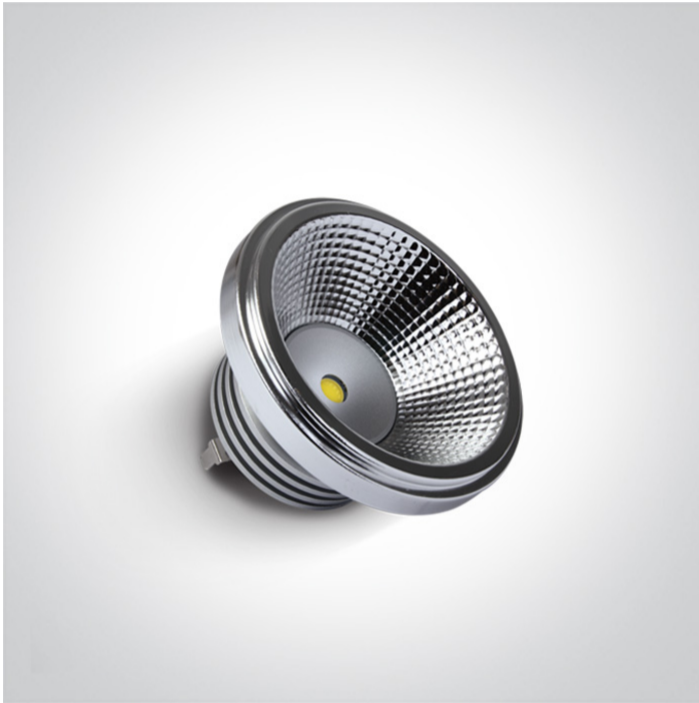


25 Lamps > 12V R111 G53 LED

7510R/D/45



R111 COB LED G53 10W 12V AC/DC lamp.

Suitable for residential and commercial applications.

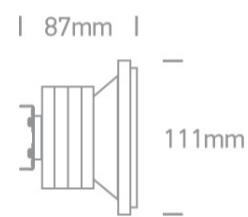
Complies with standard EN62560 and any other specific standards.



Downloads



Dimensions



Physical Specification


Item Group	25 Lamps
Family	12V R111 G53 LED
Order Code	7510R/D/45
Shape	Circular
Height	87mm
Diameter	111mm

Electrical Characteristics

Gear	Order Separately
Lamp	
Input Type	Mains Voltage

Input Voltage	12V DC
Power(Watts)	10W
Lamp Type	LED
Lamp Holder	G53
LED Type	COB
Dimmable	No

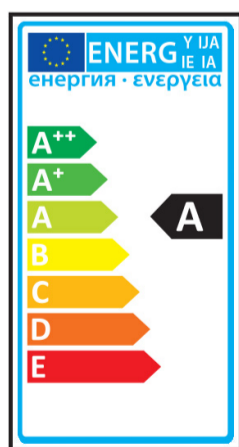
Illumination Data

Colour Temperature	6000K
Lumen Output	580lm
Light Efficiency	58lm/W
CRI	80
Beam Angle	45°
Illumination Diagram	

Packing Info

Box Weight	0,3Kg
Pcs/Carton	40
Barcode	5291889024842
HS Code	8539500000

Energy Label



Energy Consumption	11Wh/1000h
--------------------	------------

Warranty	2 Years
Average Lifetime	50000hrs
Switching Cycles	15000
Weee Directive	Yes