

IP68 Flexible COB LED light strip, 10W/meter.Supplied in 5 meters roll with white PCB and double adhesive tape for a better fixing.

Can be cut every 6,25cm.

Requires 24V DC constant voltage LED driver.

Complies with standard EN60598-1 and any other specific standards.



Downloads



Dimensions



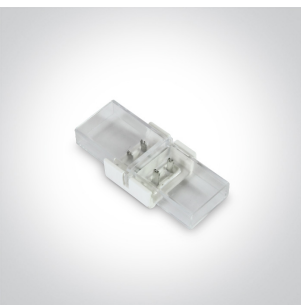
Accessories



7827A



7846WB



7846WC



7846WP

Related items



20030

Physical Specification

Item Group
Family
Order Code
Material
Shape
Length
Width
Surface Ceiling
Surface Wall
Surface Floor/Ground
Indoor
Outdoor


08 Strips & Profiles
The COB IP68 Lightline
7846WA/W
Silicone
Rectangular
5000mm
10mm
Yes
Yes
Yes
Yes
Yes

Electrical Characteristics

Fitting

Input Type
Input Voltage
Safety Class
Power(Watts)
IP Rating
Light Source
LED Type
LED Number
F Mark

Constant Voltage
24V DC

10W/m
IP68
LED built in
COB
512LEDs/m


Illumination Data

Colour Temperature
Lumen Output
Light Efficiency

3000K
650lm/m
65lm/W

CRI
Illumination Diagram

90


Packing Info

Pcs/Carton
Barcode
HS Code

50
5291889071280
9405409989

Certification & Warranty

Warranty
Weee Directive

3 Years
Yes