

02 Recessed Spots Fixed LED>The Super Mini Series

10101D/B/W



1W Recessed Dark Light LED spot with removable head, IP20.

Requires 350mA driver.

Driver can not pass through cutout hole.

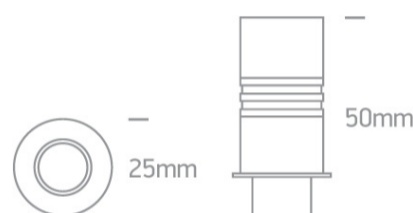
Complies with standard EN60598-1 and any other specific standards.



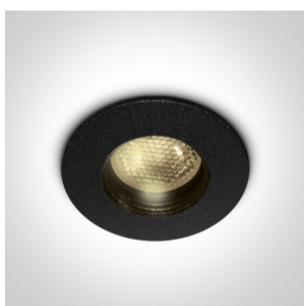
Downloads



Dimensions



Gallery



Must be ordered separately



89004

Physical Specification

Item Group	02 Recessed Spots Fixed LED
Family	The Super Mini Series
Order Code	10101D/B/W
Colour	Black
Material	Die Cast
Shape	Circular
Height	50mm
Diameter	25mm
Cutout Hole Diameter	20mm
Recessed Ceiling	Yes
Depth Required	45mm
Indoor	Yes
Adjustable	No


Electrical Characteristics

Fitting

Input Type	Constant Current
Input Current	350mA
Safety Class	
Power(Watts)	1W
IP Rating	IP20
Light Source	LED built in
LED Brand	Cree
Cable Length	40cm
F Mark	

Illumination Data

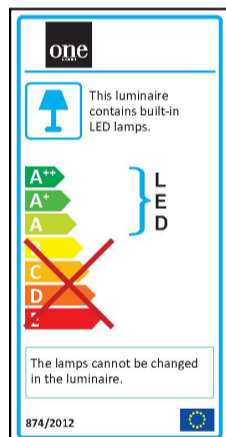
Colour Temperature	3000K
--------------------	-------

Lumen Output	60lm
Light Efficiency	60lm/W
CRI	80
Illumination Diagram	
Dark Light	Yes

Packing Info

Box Length	5cm
Box Width	5cm
Box Height	4cm
Pcs/Carton	100
Barcode	5291889061823
HS Code	9405409900

Energy Label



Certification & Warranty

Warranty	3 Years
----------	---------

