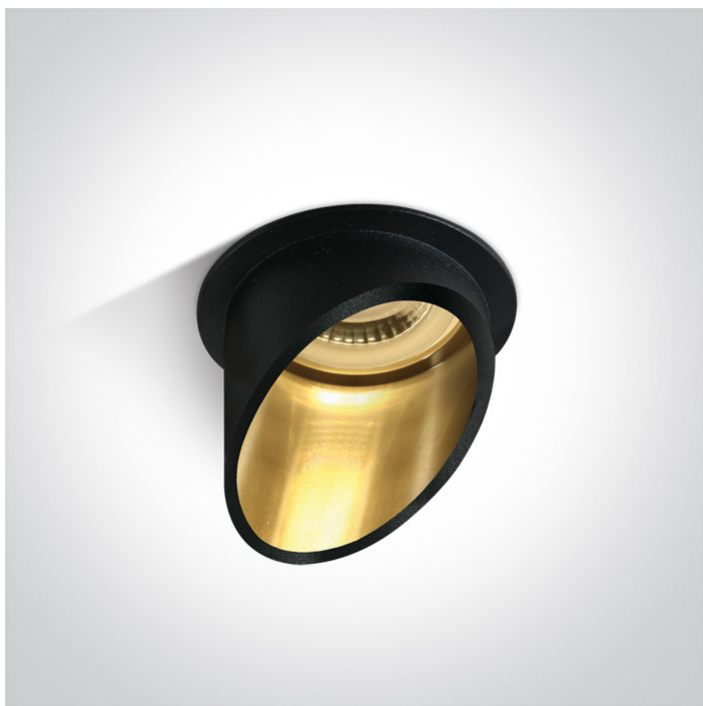


01 Recessed Spots Fixed > Recessed Cut Cylinders Aluminium

10105E1/B/GL



Recessed MR16 spot with GU10 lampholder.

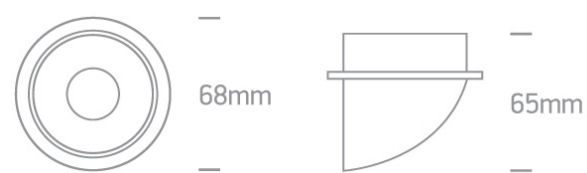
Complies with standard EN60598-1 and any other specific standards.



Downloads



Dimensions



Physical Specification

Item Group	01 Recessed Spots Fixed
Family	Recessed Cut Cylinders Aluminium
Order Code	10105E1/B/GL
Colour	Black-Gold
Material	Aluminium
Shape	Circular
Height	65mm
Diameter	68mm
Cutout Hole Diameter	62mm
Recessed Ceiling	Yes
Depth Required	100mm
Indoor	Yes

Adjustable

No

### Electrical Characteristics

Gear

No

### Fitting + Driver

Input Voltage

100-240V

50 Hz

Yes

60 Hz

Yes

Safety Class



Power(Watts)

10W

IP Rating

IP20

Light Source

Replaceable lamp

Lamp Holder

GU10

Number of Lamps

1

Dimmable

N/A

Cable Length

15cm

F Mark



### Illumination Data

Illumination Diagram



Dark Light

Yes

### Packing Info

Pcs/Carton

50

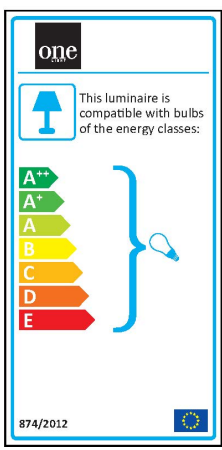
Barcode

5291889065579

HS Code

9405409900

### Energy Label



## Certification & Warranty

Warranty

5 Years

Weee Directive

Yes