

02 Recessed Spots Fixed LED>The Fire Rated IP65 Range

10107DF/W



7W COB LED Fire Rated recessed Spot, IP65.

Supplied with Triac dimmable LED driver.

Complete with white ring.

Complies with standard EN60598-1 and any other specific standards.



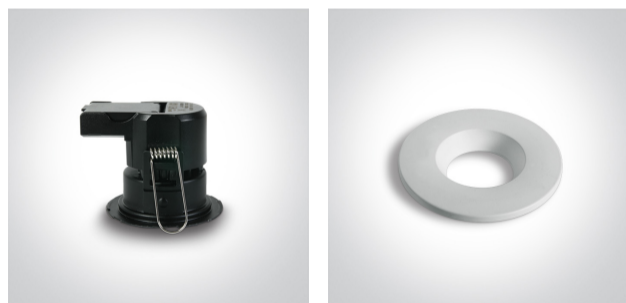
Downloads



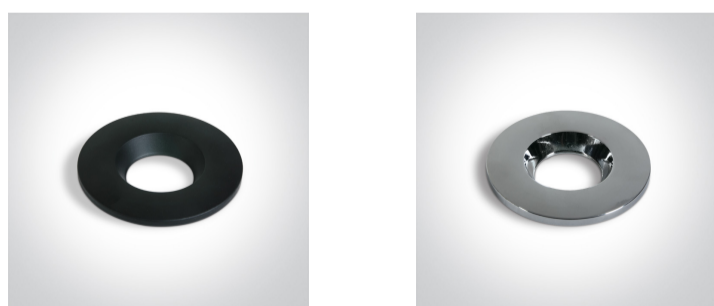
Dimensions



Gallery



Related items



050178/B

050178/C

Physical Specification

Item Group



02 Recessed Spots Fixed LED

Family

The Fire Rated IP65 Range

Order Code	10107DF/W
Colour	White
Material	Metal
Shape	Circular
Height	65mm
Diameter	78mm
Cutout Hole Diameter	65mm
Recessed Ceiling	Yes
Depth Required	80mm
Indoor	Yes
Outdoor	Yes
Adjustable	No

#### Electrical Characteristics

Gear	Built In
Fitting + Driver	
Input Voltage	220-240V
50 Hz	Yes
60 Hz	Yes
Safety Class	
Power(Watts)	7W
IP Rating	IP65
Light Source	LED built in
Dimmable	Yes
Dimmer type	Triac
F Mark	

Fitting	
Input Type	Constant Current
Power(Watts)	7W

IP Rating
Light Source
LED Type
F Mark

IP65
LED built in
SMD


### Gear

Gear Type
Input Voltage
50 Hz
60 Hz
IP Rating
Safety Class
Output Terminal

Led Driver
220-240V
Yes
Yes
IP20

Connector

### Illumination Data

Colour Temperature
Lumen Output
Light Efficiency
CRI
Beam Angle
Illumination Diagram

3000K
500lm
71,42lm/W
80
60°


### Packing Info

Pcs/Carton
Barcode
HS Code

36
5291889063193
9405409900

### Energy Label



## Certification & Warranty

Warranty

3 Years

Weee Directive

Yes