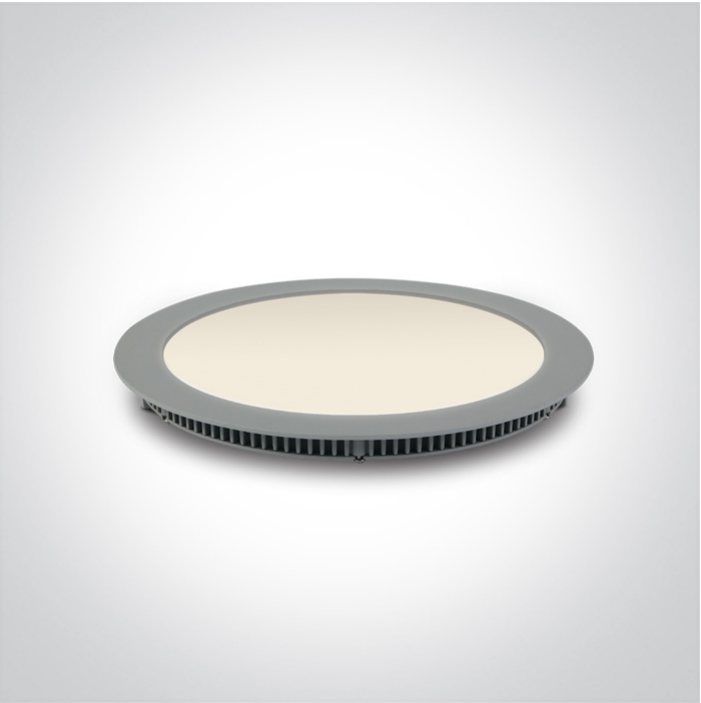




06 Downlights Fixed LED>The 18-30W Round Recessed Panels Die cast

10120F/G/W



30W slim downlight LED, IP40, ideal for commercial applications such as offices, galleries and showrooms.

Supplied with 1000mA non-dimmable LED driver.

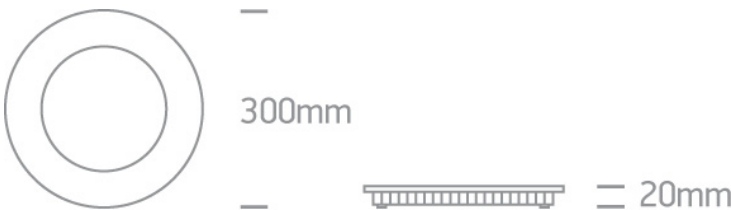
Complies with standard EN60598-1 and any other specific standards.



Downloads



Dimensions



Gallery






Physical Specification

Item Group	06 Downlights Fixed LED
Family	The 18-30W Round Recessed Panels Die cast
Order Code	10120F/G/W
Colour	Grey
Material	Die Cast
Diffuser Material	Acrylic
Shape	Circular

Height	20mm
Diameter	300mm
Cutout Hole Diameter	285mm
Recessed Ceiling	Yes
Depth Required	40mm
Indoor	Yes
Adjustable	No

Electrical Characteristics

Gear	External-Included
Fitting + Driver	
Input Voltage	100-240V
50 Hz	Yes
60 Hz	Yes
Safety Class	
Power(Watts)	30W
IP Rating	IP40
Light Source	LED built in
Dimmable	No
F Mark	


Fitting	
Input Type	Constant Current
Input Current	1000mA
Voltage	28V
Safety Class	
Power(Watts)	28W
IP Rating	IP40
Light Source	LED built in
LED Type	SMD 2016

LED Brand
LED Number

Epistar
208

Gear

Gear Type
Input Voltage
50 Hz
60 Hz
Power(Watts)
Power Factor
Constant Current
1000mA
IP Rating
Safety Class
Dimmable
Ambient Temp
Operating Temp
Housing Material
Brand
Protection

Led Driver
100-240V
Yes
Yes
23-28W
0,9
Yes
23-28V
IP20

No
40°C
85°C
Plastic
One Light
Open Circuit/Short Circuit

Illumination Data

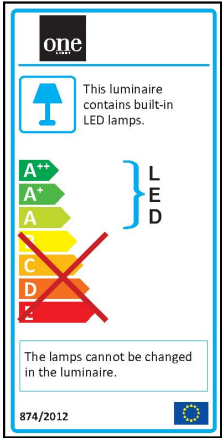
Colour Temperature
Lumen Output
Light Efficiency
CRI
Beam Angle
Illumination Diagram

3000K
1797lm
60lm/W
80
120°


Packing Info

Box Length	38cm
Box Width	31cm
Box Height	3cm
Box Weight	1,13Kg
Pcs/Carton	10
Barcode	5291889034971
HS Code	9405409900

Energy Label



Certification & Warranty

Warranty	2 Years
Average Lifetime	30000 hours
Weee Directive	Yes