

06 Downlights Fixed LED>Architectural Downlights Die cast

10128/G/W



28W LED architectural downlight, IP20.

Complete with LED driver.

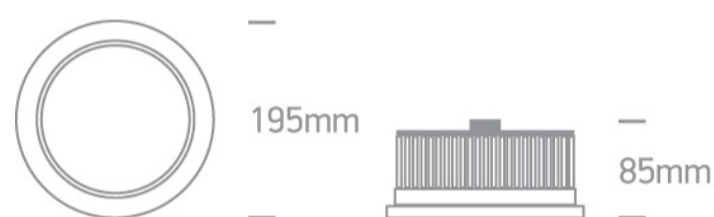
Complies with standard EN60598-1 and any other specific standards.



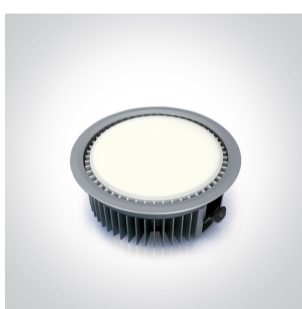
Downloads



Dimensions



Gallery





Physical Specification

Item Group	06 Downlights Fixed LED
Family	Architectural Downlights Die cast
Order Code	10128/G/W
Colour	Grey
Material	Die Cast
Diffuser Material	Acrylic
Shape	Circular

Height	85mm
Diameter	195mm
Cutout Hole Diameter	169mm
Recessed Ceiling	Yes
Depth Required	110mm
Indoor	Yes
Adjustable	No

## Electrical Characteristics

Gear	Built In
Fitting + Driver	
Input Voltage	220-240V
50 Hz	Yes
60 Hz	Yes
Safety Class	
Power(Watts)	28W
IP Rating	IP20
Light Source	LED built in
Dimmable	No
F Mark	

Fitting	
Input Type	Constant Current
IP Rating	IP20
Light Source	LED built in

Gear	
Gear Type	Led Driver
Input Voltage	220-240V
50 Hz	Yes

60 Hz
IP Rating
Safety Class
Dimmable
Housing Material
Brand

Yes
IP20

No
Plastic
One Light

### Illumination Data

Colour Temperature
Lumen Output
Light Efficiency
CRI
Beam Angle
Illumination Diagram

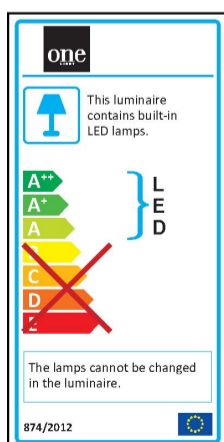
3000K
1150lm
41lm/W
80
90°


### Packing Info

Box Length
Box Width
Box Height
Pcs/Carton
Barcode
HS Code

25cm
21,5cm
11,5cm
10
5291889027393
9405409900

### Energy Label



Warranty

---

2 Years

---

Weee Directive

---

Yes

---