

04 Recessed Spots Adjustable LED>The 3x1W Glass Lens Spots

11103N/W/D/35



3x1W LED glass lens adjustable recessed spot, IP20.

Requires 350mA driver.

Complies with standard EN60598-1 and any other specific standards.



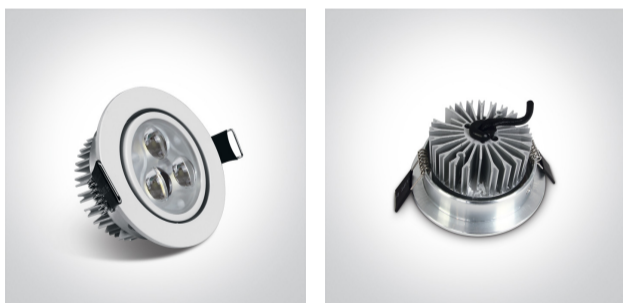
Downloads



Dimensions



Gallery



Must be ordered separately



89004

## Physical Specification


|                      |                                  |
|----------------------|----------------------------------|
| Item Group           | 04 Recessed Spots Adjustable LED |
| Family               | The 3x1W Glass Lens Spots        |
| Order Code           | 11103N/W/D/35                    |
| Colour               | White                            |
| Material             | Aluminium                        |
| Diffuser Material    | Glass                            |
| Shape                | Circular                         |
| Height               | 40mm                             |
| Diameter             | 80mm                             |
| Cutout Hole Diameter | 70mm                             |
| Recessed Ceiling     | Yes                              |
| Depth Required       | 50mm                             |
| Indoor               | Yes                              |
| Adjustable           | 1 Direction                      |

## Electrical Characteristics

### Fitting

|               |   |
|---------------|---|
| Input Type    | Constant Current  |
| Input Current | 350mA   |
| Safety Class  |  |
| Power(Watts)  | 3W  |
| IP Rating     | IP20  |
| Light Source  | LED built in  |
| LED Number    | 3   |
| Cable Length  | 40cm  |
| F Mark        |  |

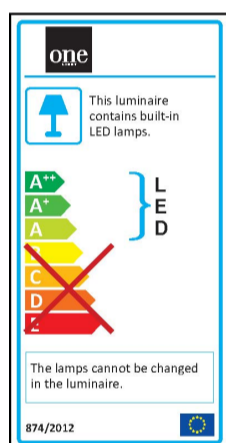
## Illumination Data

|                      |   |
|----------------------|---|
| Colour Temperature   | 6000K   |
| Lumen Output         | 180lm   |
| Light Efficiency     | 60lm/W  |
| Beam Angle           | 35°   |
| Illumination Diagram |  |

## Packing Info

|            |               |
|------------|---------------|
| Pcs/Carton | 100           |
| Barcode    | 5291889023227 |
| HS Code    | 9405409900    |

## Energy Label



## Certification & Warranty

|                |         |
|----------------|---------|
| Warranty       | 2 Years |
| Weee Directive | Yes     |