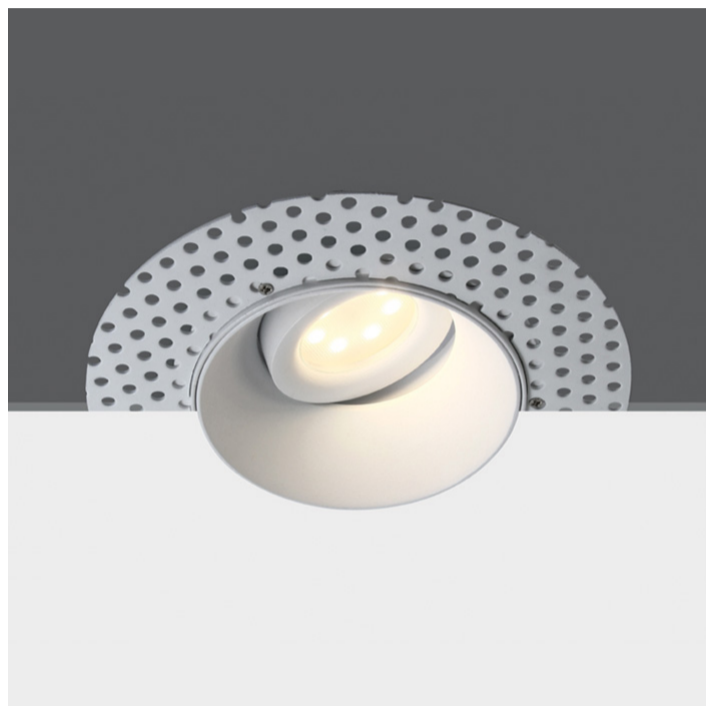


03 Recessed Spots Adjustable > The Trimless GU10 Round Range

11105UTR/W



Recessed Trimless adjustable MR16 spot with GU10 lamp holder.

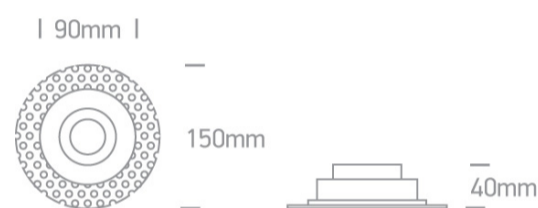
Complies with standard EN60598-1 and any other specific standards.



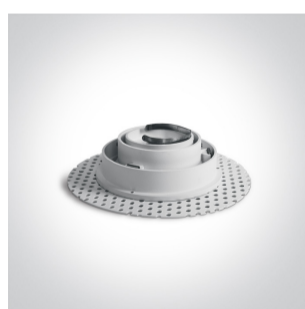
Downloads



Dimensions



Gallery





Physical Specification

Item Group	03 Recessed Spots Adjustable
Family	The Trimless GU10 Round Range
Order Code	11105UTR/W
Colour	White
Material	Die Cast
Shape	Circular
Height	40mm

Diameter	150mm
Cutout Hole Diameter	105mm
Recessed trimless ceiling	Yes
Depth Required	120mm
Indoor	Yes
Adjustable	2 Directions

Electrical Characteristics

Gear	No
Fitting + Driver	
Input Voltage	100-240V
50 Hz	Yes
60 Hz	Yes
Safety Class	
Power(Watts)	10W
IP Rating	IP20
Light Source	Replaceable lamp
Lamp Holder	GU10
Number of Lamps	1
Dimmable	N/A
Cable Length	20cm
F Mark	

Illumination Data

Illumination Diagram	
Dark Light	Yes

Packing Info

Box Length	15,5cm
------------	--------

Box Width	15,5cm
Box Height	5,2cm
Box Weight	0,38Kg
Pcs/Carton	20
Carton Length	33cm
Carton Width	33cm
Carton Height	29cm
Carton Weight	7,7Kg
Barcode	5291889057185
HS Code	9405409900

Certification & Warranty

Warranty	5 Years
Weee Directive	Yes