

04 Recessed Spots Adjustable LED>The Trimless COB Spot Die cast

11107BT/W/W



7W COB LED recessed trimless adjustable spot, suitable for indoor/outdoor applications, IP54.

Requires 700mA constant current LED driver.

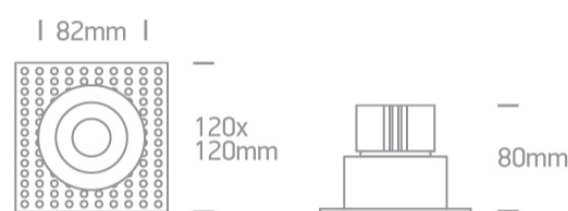
Complies with standard EN60598-1 and any other specific standards.



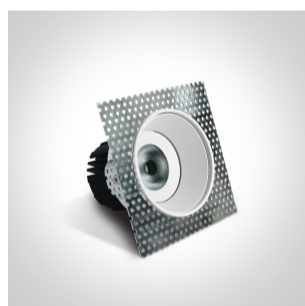
Downloads



Dimensions



Gallery



Must be ordered separately



89015A

## Related items



89015AT

## Physical Specification

Item Group	04 Recessed Spots Adjustable LED
Family	The Trimless COB Spot Die cast
Order Code	11107BT/W/W
Colour	White
Material	Die Cast
Shape	Rectangular
Length	120mm
Width	120mm
Height	80mm
Cutout Hole Diameter	96mm
Recessed trimless ceiling	Yes
Depth Required	105mm
Indoor	Yes
Outdoor	Yes
Adjustable	2 Directions

## Electrical Characteristics

### Fitting

Input Type	Constant Current
Input Current	700mA
Voltage	10V
Safety Class	III
Power(Watts)	7W

IP Rating
Light Source
LED Type
LED Brand
LED Number
Cable Length
F Mark

IP54
LED built in
COB
Bridgelux
1
40cm


## Illumination Data

Colour Temperature
Lumen Output
Light Efficiency
CRI
Beam Angle
Illumination Diagram
Dark Light

3000K
500lm
71,42lm/W
90
38°

Yes

## Packing Info

Box Length
Box Width
Box Height
Box Weight
Pcs/Carton
Barcode
HS Code

13cm
13cm
8cm
0,45Kg
30
5291889046998
9405409900

Warranty

---

5 Years

---

Average Lifetime

---

40000hours

---

Weee Directive

---

Yes

---