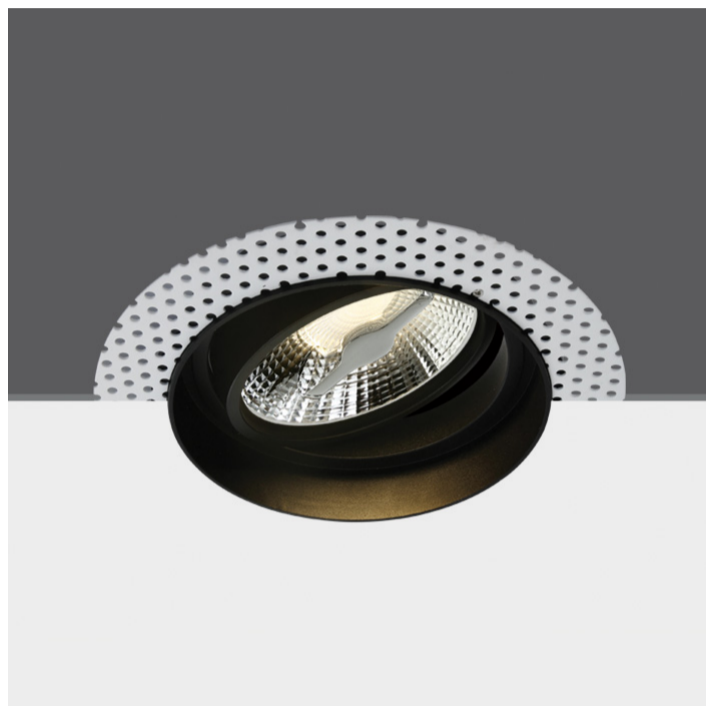


07 Downlights Adjustable>The R111 Trimless Shop Range Die cast

11110ATR/B



Recessed adjustable R111 trimless shop range with GU10 lampholder.

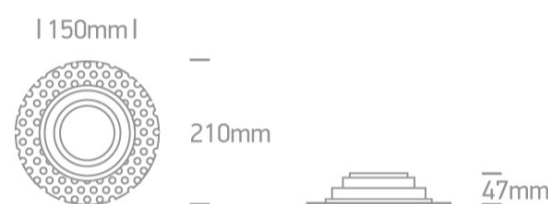
Complies with standard EN60598-1 and any other specific standards.



Downloads



Dimensions



Gallery





Physical Specification

Item Group	07 Downlights Adjustable
Family	The R111 Trimless Shop Range Die cast
Order Code	11110ATR/B
Colour	Black
Material	Die Cast
Shape	Circular
Height	47mm

Diameter	210mm
Cutout Hole Diameter	170mm
Recessed Ceiling	Yes
Depth Required	150mm
Indoor	Yes
Adjustable	2 Directions

Electrical Characteristics

Gear	No
Fitting + Driver	
Input Voltage	100-240V
50 Hz	Yes
60 Hz	Yes
Safety Class	
Power(Watts)	75W
IP Rating	IP20
Light Source	Replaceable lamp
Lamp Holder	GU10
Number of Lamps	1
Dimmable	N/A
Cable Length	20cm
F Mark	

Illumination Data

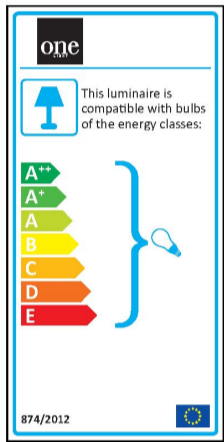
Illumination Diagram	
----------------------	---

Packing Info

Box Length	21,5cm
Box Width	21,5cm

Box Height	7cm
Box Weight	0,66Kg
Pcs/Carton	10
Carton Length	45cm
Carton Width	23cm
Carton Height	38cm
Carton Weight	6,7Kg
Barcode	5291889057208
HS Code	9405409900

Energy Label



Certification & Warranty

Warranty	5 Years
Weee Directive	Yes