

04 Recessed Spots Adjustable LED>The Trimless COB Spot Die cast

11112T/W/W



12W COB LED recessed trimless adjustable spot, suitable for indoor applications, IP20.

Requires 700mA constant current LED driver.

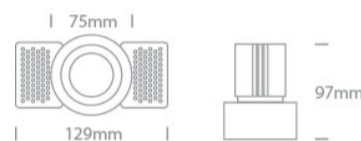
Complies with standard EN60598-1 and any other specific standards.



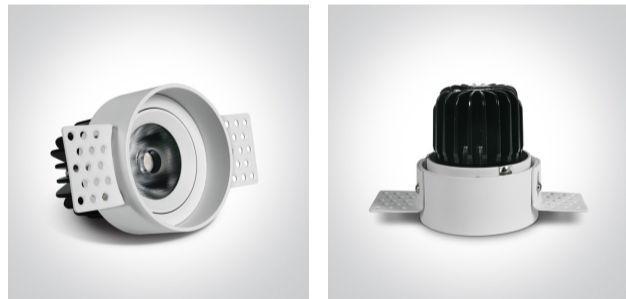
Downloads



Dimensions



Gallery



Must be ordered separately



89015A

Related items



89015AT

Physical Specification

Item Group	04 Recessed Spots Adjustable LED
Family	The Trimless COB Spot Die cast
Order Code	11112T/W/W
Colour	White
Material	Die Cast
Shape	Circular
Height	97mm
Diameter	75mm
Cutout Hole Diameter	75mm
Recessed trimless ceiling	Yes
Depth Required	110mm
Indoor	Yes
Adjustable	2 Directions

Electrical Characteristics

Fitting


Input Type	Constant Current
Input Current	700mA
Safety Class	III
Power(Watts)	12W
IP Rating	IP20
Light Source	LED built in
LED Type	COB

LED Brand
LED Number
Cable Length
F Mark

Bridgelux
1
40cm


Illumination Data

Colour Temperature
Lumen Output
Light Efficiency
CRI
Beam Angle
Illumination Diagram
Dark Light

3000K
1100lm
91,67lm/W
90
38°

Yes

Packing Info

Pcs/Carton
Barcode
HS Code

40
5291889034933
9405409900

Certification & Warranty

Warranty
Weee Directive

5 Years
Yes