

New 2021 Edition 2>Wall & Ceiling LED

12122D/W/W



22W COB LED Cylinder CRI 90 with exchangeable reflectors .

Reflector must be order separately.
Complete with non-dimmable LED driver.

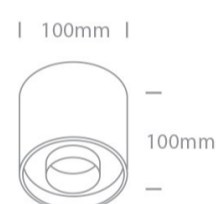
Complies with standard EN60598-1 and any other specific standards.



Downloads



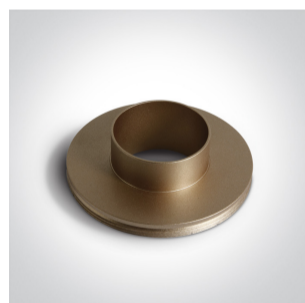
Dimensions



Must be ordered separately



050208/B



050208/BS





050208/W

Physical Specification

Item Group	New 2021 Edition 2
Family	Wall & Ceiling LED
Order Code	12122D/W/W
Colour	White
Material	Aluminium
Shape	Circular


Height	100mm
Diameter	100mm
Surface Ceiling	Yes
Indoor	Yes
Adjustable	No

Electrical Characteristics


Gear	Built In
Fitting + Driver	
Input Voltage	220-240V
50 Hz	Yes
60 Hz	Yes
Safety Class	
Power(Watts)	22W
IP Rating	IP20
Light Source	LED built in
Dimmable	No
F Mark	

Fitting	
Input Type	Constant Current
Input Current	500mA
Voltage	38,4V
Power(Watts)	19,2W
IP Rating	IP20
Light Source	LED built in
LED Type	COB
LED Brand	Cree

Gear	
------	--

Gear Type	Led Driver
Input Voltage	220-240V
50 Hz	Yes
60 Hz	Yes
Power(Watts)	13,5-20W
Power Factor	0,9
Constant Current	Yes
500mA	27-40V
IP Rating	IP20
Safety Class	
Dimmable	No
Housing Material	Plastic
Brand	KEGU

Illumination Data

Colour Temperature	3000K
Lumen Output	1540lm
Light Efficiency	70lm/W
CRI	90
Beam Angle	24°
Illumination Diagram	
Dark Light	Yes

Packing Info

Box Length	10,5cm
Box Width	10,5cm
Box Height	11cm
Pcs/Carton	20
Barcode	5291889069607
HS Code	9405409900

Warranty

3 Years

Weee Directive

Yes
