

New 2021 Edition 3>Office & Kitchen

38151A/W/C



50W UGR19 Linear system with diffuser for surface or suspended installation, ideal for offices.

Complete with 1500mA driver.

Complies with standard EN60598-1 and any other specific standards.



Downloads



Dimensions



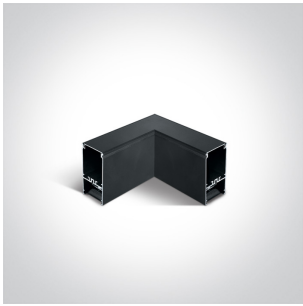
Gallery



Accessories



050170



050170C/B

Related items



38150E/B

Physical Specification

Item Group	New 2021 Edition 3
Family	Office & Kitchen
Order Code	38151A/W/C
Colour	White
Material	Aluminium
Shape	Rectangular
Length	1500mm
Width	70mm
Height	35mm
Surface Ceiling	Yes
Suspended Ceiling	Yes
Indoor	Yes
Adjustable	No

Electrical Characteristics

Gear	Built In
Fitting + Driver	
Input Voltage	220-240V
50 Hz	Yes
60 Hz	Yes
Safety Class	
Power(Watts)	50W
IP Rating	IP20

Light Source
Dimmable
Cable Length
F Mark

LED built in
No
300cm



Fitting

Input Type
Input Current
Voltage
Power(Watts)
IP Rating
Light Source
LED Type
LED Brand


Constant Current
1500mA
31V
46,5W
IP20
LED built in
SMD 2835
Epistar

Gear

Gear Type
Input Voltage
50 Hz
60 Hz
Power(Watts)
Power Factor
Constant Current
1500mA
IP Rating
Safety Class
Dimmable
Brand
Protection

Led Driver
220-240V
Yes
Yes
45-63W
0,9
Yes
30-42V
IP20

No
AGT
0

Illumination Data

Colour Temperature	4000K
Lumen Output	4250lm
Light Efficiency	85lm/W
CRI	90
Beam Angle	120°
Illumination Diagram	
UGR	19

Packing Info

Pcs/Carton	9
Barcode	5291889070269
HS Code	9405409900

Certification & Warranty

Warranty	3 Years
Weee Directive	Yes