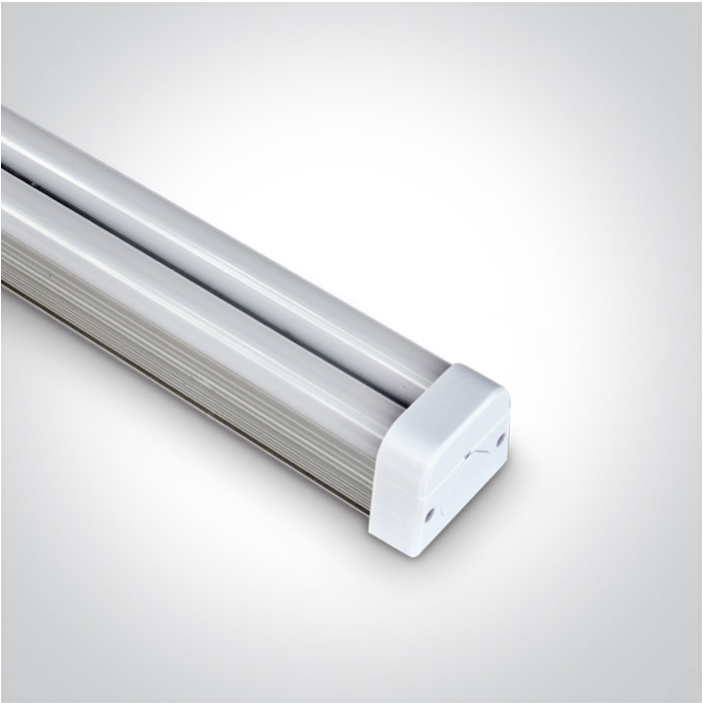




09 LED Strips & Profiles>The 230V Solid Double LED Strip Aluminium + PC

38207L/C



7W 230V Double Solid LED Strip, IP20.

Complete with non-dimmable LED driver.

Supplied with 6cm corner cable, 50 cm power cable 1pc connector & 3 fixing clips.

Connect Maximum 5pcs at 110V & 10pcs at 230V

Complies with standard EN60598-1 and any other specific standards.



Downloads



Dimensions



Gallery





Physical Specification

Item Group	09 LED Strips & Profiles
Family	The 230V Solid Double LED Strip Aluminium + PC
Order Code	38207L/C
Material	Aluminium
Diffuser Material	PC

Shape	Rectangular
Length	300mm
Width	45mm
Height	36mm
Surface Ceiling	Yes
Surface Wall	Yes
Indoor	Yes


Electrical Characteristics

Gear	Built In
Fitting + Driver	
Input Voltage	100-240V
50 Hz	Yes
60 Hz	Yes
Safety Class	
Power(Watts)	7W
IP Rating	IP20
Light Source	LED built in
Dimmable	No
F Mark	

Fitting	
Input Type	Constant Current
Power(Watts)	7W
IP Rating	IP20
Light Source	LED built in

Gear	
Gear Type	Led Driver
Input Voltage	100-240V

50 Hz
60 Hz
Power(Watts)
Constant Current
IP Rating
Safety Class
Dimmable

Yes
Yes
7W
Yes
IP20

No

Illumination Data

Colour Temperature
Lumen Output
Light Efficiency
CRI
Illumination Diagram

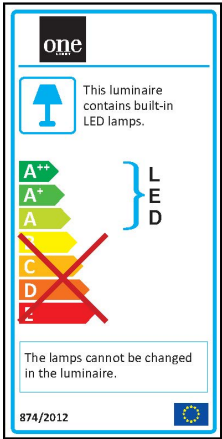
4000K
510lm
72,85lm/W
75


Packing Info

Pcs/Carton
Barcode
HS Code

30
5291889031383
9405409900

Energy Label



Warranty

2 Years

Weee Directive

Yes