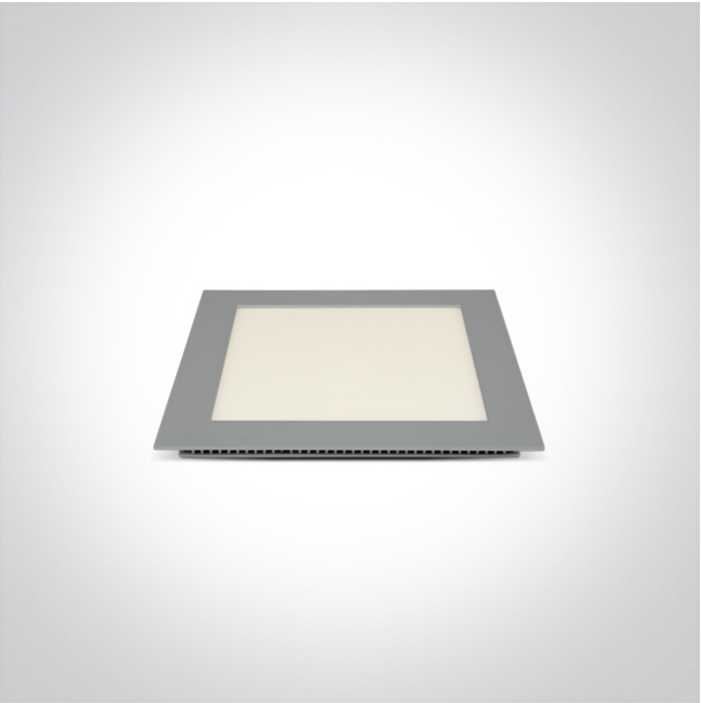




06 Downlights Fixed LED>The 22-30W Square Recessed Panels Die cast

50122F/G/W



22W slim downlight LED, IP40, ideal for commercial applications such as offices, galleries and showrooms.

Supplied with 700mA non-dimmable LED driver.

Complies with standard EN60598-1 and any other specific standards.



Downloads



Dimensions



Gallery






Physical Specification

Item Group	06 Downlights Fixed LED
Family	The 22-30W Square Recessed Panels Die cast
Order Code	50122F/G/W
Colour	Grey
Material	Die Cast
Diffuser Material	Acrylic
Shape	Rectangular

Length	220mm
Width	220mm
Height	20mm
Cutout Hole Width	204mm
Cutout Hole Length	204mm
Recessed Ceiling	Yes
Depth Required	40mm
Indoor	Yes
Adjustable	No

Electrical Characteristics

Gear	External-Included
Fitting + Driver	
Input Voltage	100-240V
50 Hz	Yes
60 Hz	Yes
Safety Class	
Power(Watts)	22W
IP Rating	IP40
Light Source	LED built in
Dimmable	No
F Mark	

Fitting	
Input Type	Constant Current
Input Current	700mA
Voltage	28V
Safety Class	
Power(Watts)	19,6W
IP Rating	IP40

Light Source
LED Type
LED Brand
LED Number

LED built in
SMD 2016
Epistar
152

Gear

Gear Type
Input Voltage
50 Hz
60 Hz
Power(Watts)
Power Factor
Constant Current
700mA
IP Rating
Safety Class
Dimmable
Ambient Temp
Operating Temp
Housing Material
Brand

Led Driver
100-240V
Yes
Yes
16-20W
0,9
Yes
23-28V
IP20

No
40°C
85°C
Plastic
ONE LIGHT Ltd

Illumination Data

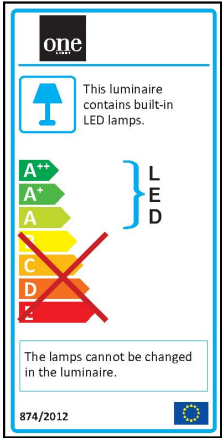
Colour Temperature
Lumen Output
Light Efficiency
CRI
Beam Angle
Illumination Diagram

3000K
1490lm
67,72lm/W
80
120°


Packing Info

Box Length	29cm
Box Width	22cm
Box Height	3cm
Box Weight	0,85Kg
Pcs/Carton	10
Barcode	5291889039846
HS Code	9405409900

Energy Label



Certification & Warranty

Warranty	2 Years
Average Lifetime	30000 hours
Weee Directive	Yes