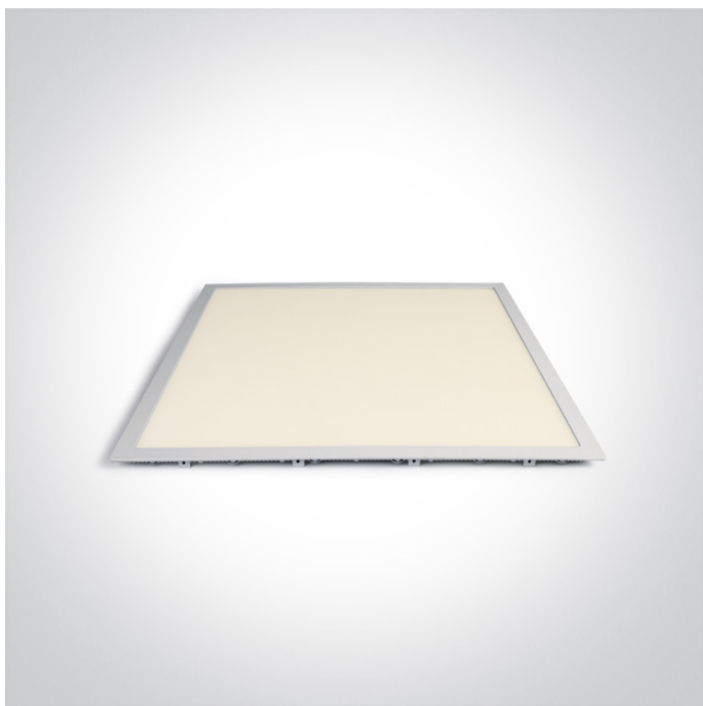


06 Downlights Fixed LED>The 48W Square Recessed Panel Die cast

50148PE/W/W



48W slim downlight LED, IP40, ideal for commercial applications such as offices, galleries and showrooms.

Requires 1200mA LED driver.

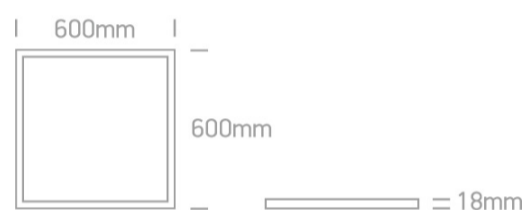
Complies with standard EN60598-1 and any other specific standards.



Downloads



Dimensions



Gallery



Must be ordered separately



89048

Related items



89048T



89050L



89050TLD

Physical Specification

Item Group	06 Downlights Fixed LED
Family	The 48W Square Recessed Panel Die cast
Order Code	50148PE/W/W
Colour	White
Material	Die Cast
Diffuser Material	Acrylic
Shape	Rectangular
Length	600mm
Width	600mm
Height	18mm
Cutout Hole Width	585mm
Cutout Hole Length	585mm
Recessed Ceiling	Yes
Depth Required	80mm
Indoor	Yes
Adjustable	No

Electrical Characteristics

Fitting	
Input Type	Constant Current
Input Current	1200mA
Safety Class	III
Power(Watts)	48W

IP Rating
Light Source
LED Type
LED Brand
LED Number

IP20
LED built in
SMD 2835
Epistar
240

Illumination Data

Colour Temperature
Lumen Output
Light Efficiency
CRI
Beam Angle
Illumination Diagram

3000K
3900lm
81,25lm/W
80
120°


Packing Info

Box Length
Box Width
Box Height
Box Weight
Pcs/Carton
Barcode
HS Code

72cm
65cm
4,5cm
4,05Kg
4
5291889041924
9405109890

Certification & Warranty

Warranty

2 Years

Average Lifetime

30000 hours

Weee Directive

Yes
