

04 Recessed Spots Adjustable LED>Moving Inner Cylinder Range

51110C/W/W



10W COB LED Adjustable Dark Light recessed spot IP20.

Complete with 500mA driver.

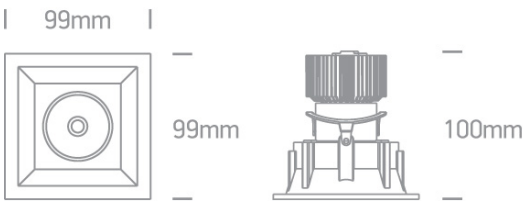
Complies with standard EN60598-1 and any other specific standards.



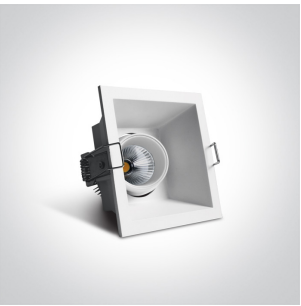
Downloads



Dimensions



Gallery






Physical Specification

Product Type	Gear
Item Group	04 Recessed Spots Adjustable LED
Family	Moving Inner Cylinder Range
Order Code	51110C/W/W
Colour	White
Material	Aluminium
Shape	Rectangular

Length	99mm
Width	99mm
Height	100mm
Cutout Hole Width	85mm
Cutout Hole Length	85mm
Recessed Ceiling	Yes
Depth Required	120mm
Indoor	Yes
Adjustable	2 Directions

Electrical Characteristics

Gear	External-Included
Fitting + Driver	
Input Voltage	220-240V
50 Hz	Yes
60 Hz	Yes
Safety Class	
Power(Watts)	10W
IP Rating	IP20
Light Source	LED built in
Dimmable	No
Cable Length	40cm
F Mark	

Fitting	
Input Type	Constant Current
Input Current	500mA
Voltage	18,5V
Safety Class	
Power(Watts)	9,25W

IP Rating
Light Source
LED Type
LED Brand
LED Number

IP20
LED built in
COB
Bridgelux
1

Gear


Gear Type
Input Voltage
50 Hz
60 Hz
Power(Watts)
Power Factor
Constant Current
500mA
IP Rating
Safety Class
Dimmable
Ambient Temp
Operating Temp
Manufacturer

Led Driver
220-240V
Yes
Yes
6-12W
0,5
Yes
12-24V
IP20

No
50°C
80°C
Eaglerise

Illumination Data

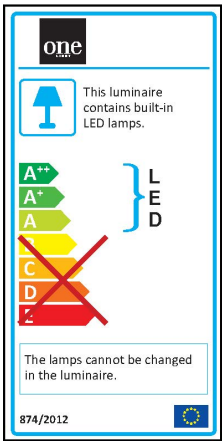
Colour Temperature
Lumen Output
Light Efficiency
CRI
Beam Angle
Illumination Diagram
Dark Light

3000K
650lm
65lm/W
80
24°

Yes

Packing Info

Box Length	11,5cm
Box Width	11,5cm
Box Height	14cm
Box Weight	0,465Kg
Pcs/Carton	36
Barcode	5291889046691
HS Code	9405409900

Energy Label



Certification & Warranty

Warranty	2 Years
Wee Directive	Yes