

04 Recessed Spots Adjustable LED>The 12W COB Range

51112/AL/W



12W COB LED Recessed Adjustable Spot.

Requires 700mA driver.

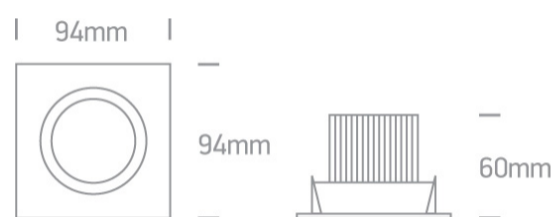
Complies with standard EN60598-1 and any other specific standards



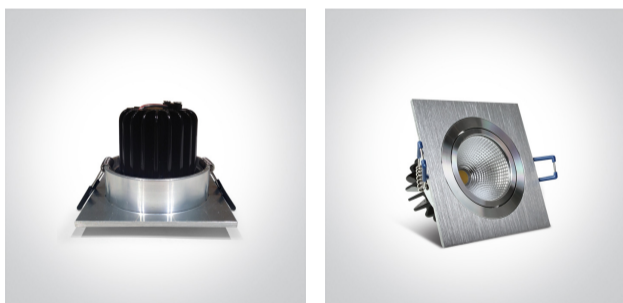
Downloads



Dimensions



Gallery



Must be ordered separately



89015A

Related items




89015AT

Physical Specification


Item Group	04 Recessed Spots Adjustable LED
Family	The 12W COB Range
Order Code	51112/AL/W
Colour	Aluminium
Material	Natural Aluminium
Shape	Rectangular
Length	94mm
Width	94mm
Height	60mm
Cutout Hole Diameter	80mm
Recessed Ceiling	Yes
Depth Required	90mm
Indoor	Yes
Adjustable	1 Direction

Electrical Characteristics

Fitting	
Input Type	Constant Current
Input Current	700mA
Voltage	14-16V
Safety Class	III
Power(Watts)	12W
IP Rating	IP20

Light Source	LED built in
LED Type	COB
LED Brand	Epistar
LED Number	1
Cable Length	40cm
F Mark	

Illumination Data

Colour Temperature	3000K
Lumen Output	1100lm
Light Efficiency	91,67lm/W
CRI	80
Beam Angle	38°
Illumination Diagram	

Packing Info

Box Length	11cm
Box Width	9cm
Box Height	9cm
Box Weight	0,304Kg
Pcs/Carton	50
Barcode	5291889042525
HS Code	9405409900

Warranty

2 Years

Weee Directive

Yes
