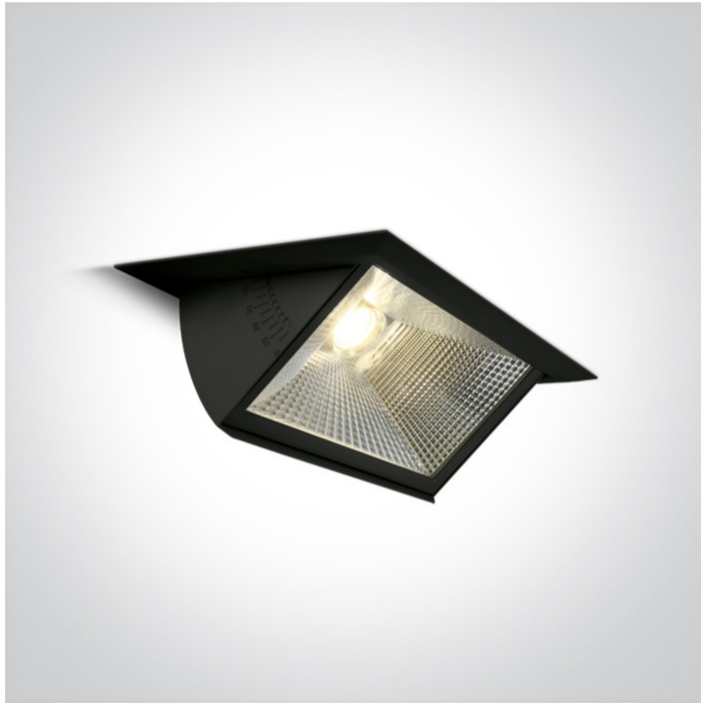


07 Downlights Adjustable LED>The Box Type Shop Range

51140/B/W



40W COB LED Recessed adjustable downlight, COB square range, IP20.

Supplied with non-dimmable LED driver.

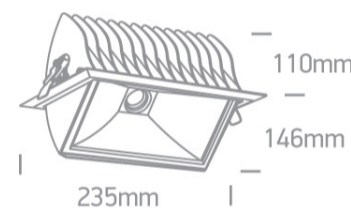
Complies with standard EN60598-1 and any other specific standards.



Downloads



Dimensions






Physical Specification

| | |
|--------------------|------------------------------|
| Item Group | 07 Downlights Adjustable LED |
| Family | The Box Type Shop Range |
| Order Code | 51140/B/W |
| Colour | Black |
| Material | Aluminium |
| Shape | Rectangular |
| Length | 235mm |
| Width | 145mm |
| Height | 110mm |
| Cutout Hole Width | 220mm |
| Cutout Hole Length | 130mm |
| Recessed Ceiling | Yes |

| | |
|----------------|-------------|
| Depth Required | 140mm |
| Indoor | Yes |
| Adjustable | 1 Direction |

Electrical Characteristics


| Gear | External-Included |
|------------------|---|
| Fitting + Driver | |
| Input Voltage | 220-240V |
| 50 Hz | Yes |
| 60 Hz | Yes |
| Safety Class |  |
| Power(Watts) | 40W |
| IP Rating | IP20 |
| Light Source | LED built in |
| Dimmable | No |
| F Mark |  |

| Fitting | |
|---------------|---|
| Input Type | Constant Current |
| Input Current | 1050mA |
| Voltage | 35V |
| Safety Class |  |
| Power(Watts) | 37W |
| IP Rating | IP20 |
| Light Source | LED built in |
| LED Type | COB |
| LED Brand | Sanan |

| Gear | |
|-----------|------------|
| Gear Type | Led Driver |

| | |
|------------------|---|
| Input Voltage | 220-240V |
| 50 Hz | Yes |
| 60 Hz | Yes |
| Power(Watts) | 34,65-42W |
| Power Factor | 0,9 |
| Constant Current | Yes |
| 1050mA | 33-40V |
| IP Rating | IP20 |
| Safety Class |  |
| Dimmable | No |
| Housing Material | Plastic |
| Brand | Lifud |

Illumination Data

| | |
|----------------------|---|
| Colour Temperature | 3000K |
| Lumen Output | 3400lm |
| Light Efficiency | 85lm/W |
| CRI | 80 |
| Beam Angle | 70° |
| Illumination Diagram |  |

Packing Info

| | |
|------------|---------------|
| Pcs/Carton | 9 |
| Barcode | 5291889061458 |
| HS Code | 9405409900 |

Warranty

2 Years

Weee Directive

Yes
