

10 Track Spots>The GU10 Track Spot Die cast

65118AT/G



50W GU10 R111 Track Spot Range .

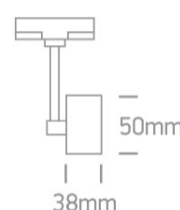
Complies with standard EN60598-1 and any other specific standards.



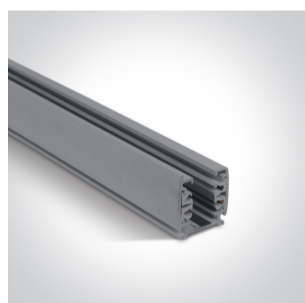
Downloads



Dimensions



Related items



40003A/G

Physical Specification



Item Group	10 Track Spots
Family	The GU10 Track Spot Die cast
Order Code	65118AT/G
Colour	Grey
Material	Die Cast
Shape	Circular
Height	38mm

Diameter	50mm
Track mounted	Yes
Indoor	Yes
Adjustable	2 Directions

#### Electrical Characteristics

Gear	No
------	----

#### Fitting + Driver

Input Voltage	100-240V
50 Hz	Yes
60 Hz	Yes
Safety Class	
Power(Watts)	50W
IP Rating	IP20
Light Source	Replaceable lamp
Lamp Holder	GU10
Number of Lamps	1
Dimmable	N/A
F Mark	

#### Illumination Data

Illumination Diagram	
----------------------	---

#### Packing Info

Box Length	12cm
Box Width	5cm
Box Height	15cm
Box Weight	0,22Kg
Pcs/Carton	40

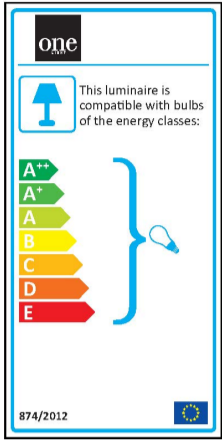
Barcode

5291889023951

HS Code

9405409900

## Energy Label



## Certification & Warranty

Warranty

5 Years

Weee Directive

Yes