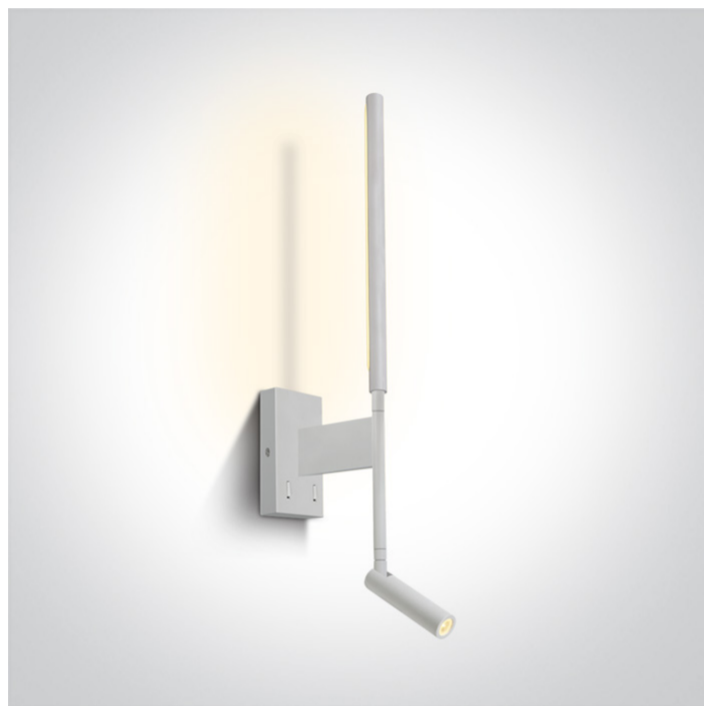


New 2021 Edition 2>Decorative

65144/W/W



3W COB LED +6W backlight bedside adjustable fitting with 2 switches, IP20.

Complete with 700mA+500mA drivers.

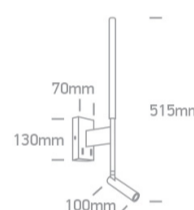
Complies with standard EN60598-1 and any other specific standards.



Downloads





Dimensions




Physical Specification

| | |
|--------------|--------------------|
| Item Group | New 2021 Edition 2 |
| Family | Decorative |
| Order Code | 65144/W/W |
| Colour | White |
| Material | Metal + Aluminium |
| Shape | Rectangular |
| Surface Wall | Yes |
| Indoor | Yes |
| Adjustable | 2 Directions |

Electrical Characteristics

| Gear | Built In |
|------------------|--|
| Fitting + Driver | |
| Input Voltage | 220-240V |
| 50 Hz | Yes |
| 60 Hz | Yes |
| Safety Class |  |
| Power(Watts) | 3W+6W |
| IP Rating | IP20 |
| Light Source | LED built in |
| Dimmable | No |
| F Mark |  |

| Fitting | |
|---------------|---|
| Input Type | Constant Current |
| Input Current | 700mA+500mA |
| Voltage | 2,8V + 9V |
| Safety Class |  |
| Power(Watts) | 1,96W + 4,5W |
| IP Rating | IP20 |
| Light Source | LED built in |
| LED Type | COB |
| LED Brand | Edison + Samsung |

| Gear | |
|------------------|------------|
| Gear Type | Led Driver |
| Input Voltage | 220-240V |
| 50 Hz | Yes |
| 60 Hz | Yes |
| Power(Watts) | 1,6-3W |
| Power Factor | 0,5 |
| Constant Current | Yes |

| |
|--------------|
| 500mA |
| 700mA |
| IP Rating |
| Safety Class |
| Dimmable |
| Brand |

| |
|---|
| 6-12V |
| 2,5-4V |
| IP20 |
|  |
| No |
| Eaglerise |

Illumination Data

| |
|----------------------|
| Colour Temperature |
| Lumen Output |
| Light Efficiency |
| CRI |
| Illumination Diagram |

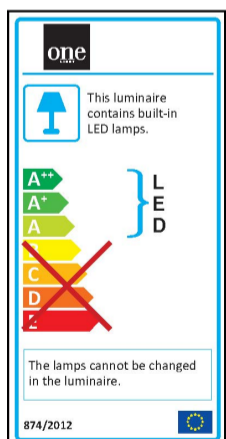
| |
|---|
| 3000K |
| 530lm |
| 58,89lm/W |
| 80 |
|  |

Packing Info

| |
|------------|
| Pcs/Carton |
| Barcode |
| HS Code |

| |
|---------------|
| 20 |
| 5291889070009 |
| 9405409900 |

Energy Label



Warranty

2 Years

Weee Directive

Yes
