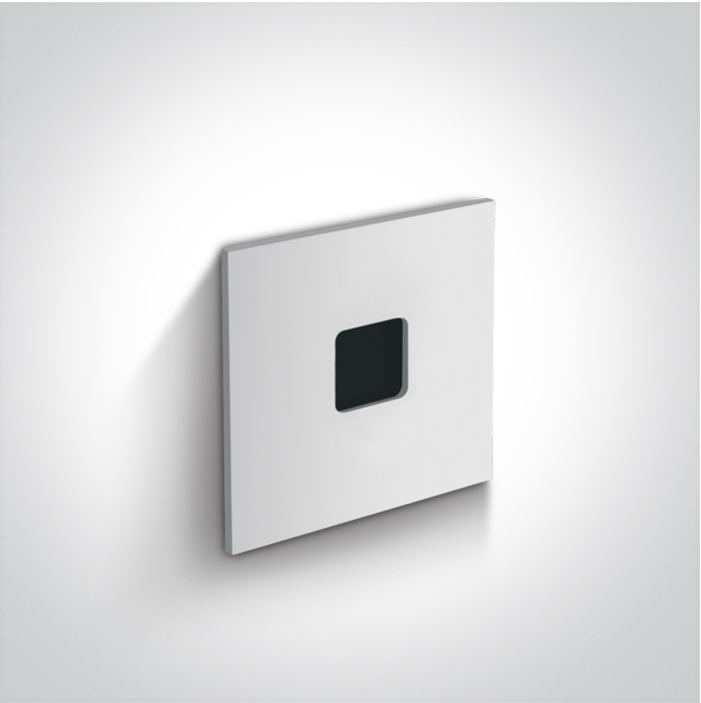


19 Wall Recessed & Inground>Indoor/Outdoor Decorative Wall Recessed Aluminium

68004A/W/W



1W 350mA LED wall recessed light, IP54, ideal for both indoor and outdoor installation.

Requires 350mA driver.

Supplied with box for concrete installation

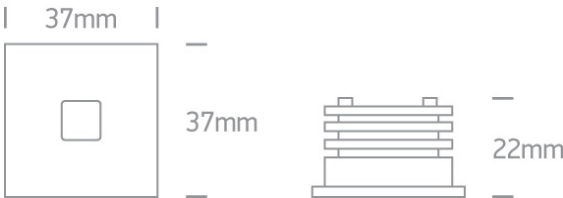
Complies with standard EN60598-1 and any other specific standards.



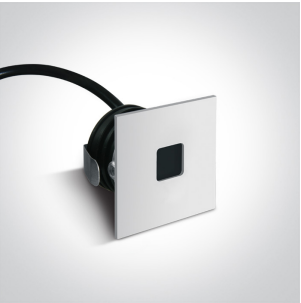
Downloads



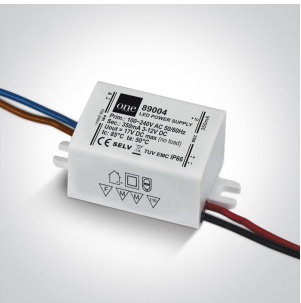
Dimensions



Gallery



Must be ordered separately





89004

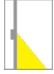
Physical Specification

Item Group	19 Wall Recessed & Inground
Family	Indoor/Outdoor Decorative Wall Recessed Aluminium
Order Code	68004A/W/W
Colour	White
Material	Aluminium
Shape	Rectangular
Length	37mm
Width	37mm
Height	22mm
Cutout Hole Diameter	36mm for Concrete Installation 33mm for Gypsum Installation
Recessed wall	Yes
Depth Required	50mm for Concrete Installation 30mm for Gyprum Installaiton
Indoor	Yes
Outdoor	Yes

Electrical Characteristics

Fitting	
Input Type	Constant Current
Input Current	350mA
Safety Class	
Power(Watts)	1W
IP Rating	IP54
Light Source	LED built in
LED Type	COB
LED Brand	Lumileds
Cable Length	200cm
F Mark	

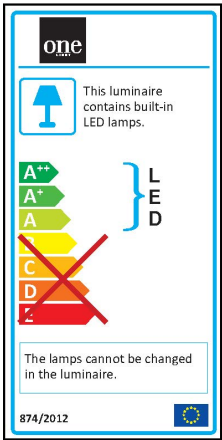
Illumination Data

Colour Temperature	3000K
Lumen Output	40lm
Light Efficiency	40lm/W
CRI	85
Beam Angle	60°
Illumination Diagram	
Dark Light	Yes

Packing Info

Box Weight	0,103Kg
Pcs/Carton	60
Barcode	5291889050308
HS Code	9405409900

Energy Label



Certification & Warranty

Warranty
Weee Directive

2 Years
Yes