

19 Wall Recessed & Inground>Indoor/Outdoor Dark Light Wall Recessed

68030/B/W



3W LED recessed wall light, IP54, ideal for, indoor and outdoor, corridors and stairs illumination.

Complete 700mA driver.

Supplied with box for concrete installation

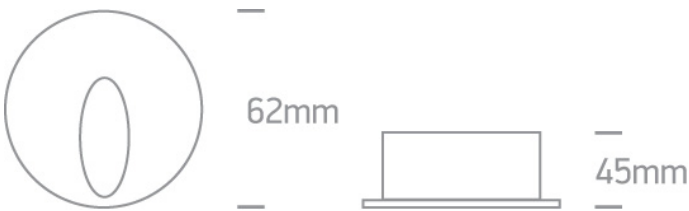
Complies with standard EN60598-1 and any other specific standards.



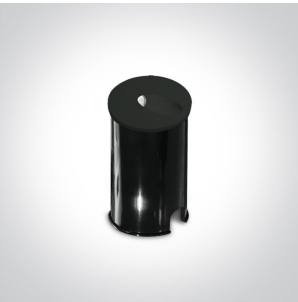
Downloads



Dimensions



Gallery






Physical Specification

Item Group	19 Wall Recessed & Inground
Family	Indoor/Outdoor Dark Light Wall Recessed
Order Code	68030/B/W
Colour	Black
Material	Aluminium
Diffuser Material	Glass
Shape	Circular


Height	45mm
Diameter	62mm
Cutout Hole Diameter	52mm
Recessed wall	Yes
Depth Required	110mm Concrete 50mm Gypsum
Indoor	Yes
Outdoor	Yes
Adjustable	No

Electrical Characteristics

Gear	Built In
Fitting + Driver	
Input Voltage	100-240V
50 Hz	Yes
60 Hz	Yes
Safety Class	
Power(Watts)	3W
IP Rating	IP54
Light Source	LED built in
Dimmable	No
F Mark	


Fitting	
Input Type	Constant Current
Input Current	700mA
Voltage	4V
Safety Class	
Power(Watts)	2,8W
IP Rating	IP54
Light Source	LED built in

LED Brand
F Mark

Cree



Gear

Gear Type
Input Voltage
50 Hz
60 Hz
Power(Watts)
Power Factor
Constant Current
700mA
IP Rating
Safety Class
Brand
Protection

Led Driver
100-240V
Yes
Yes
2,8-3,5W
0,5
Yes
4-5V
IP20

HEP
0

Illumination Data

Colour Temperature
Illumination Diagram
Dark Light

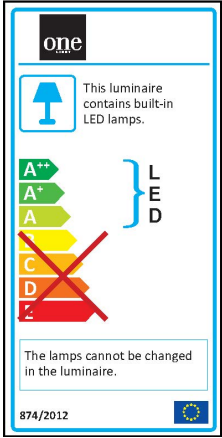
3000K

Yes

Packing Info

Box Length
Box Width
Box Height
Box Weight
Pcs/Carton
Barcode
HS Code

11cm
7,5cm
7,5cm
0,3Kg
30
5291889060222
9405409900

Energy Label



Certification & Warranty

Warranty

2 Years

Weee Directive

Yes