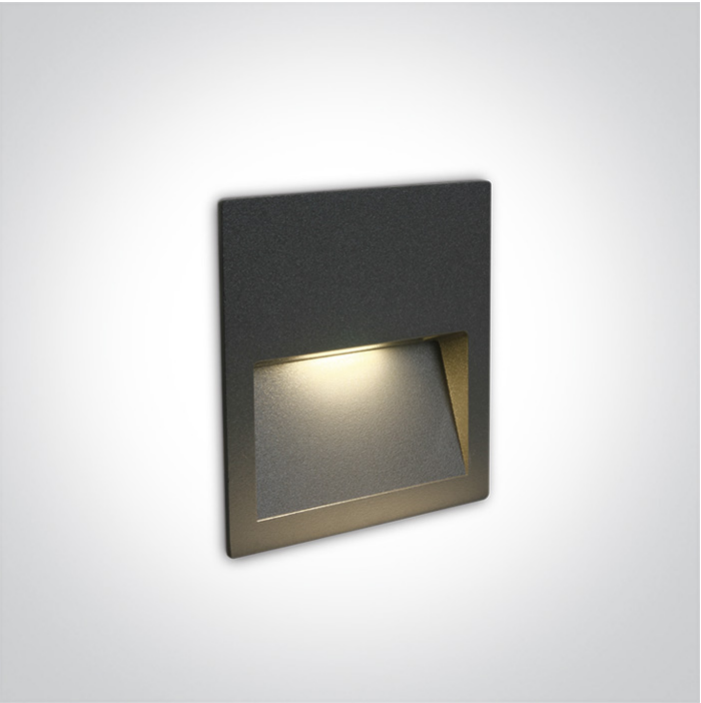




19 Wall Recessed & Inground>Outdoor Dark Light Wall Recessed Die cast

68068A/AN/W



3W LED wall recessed light, IP65, ideal for both indoor and outdoor installation.

Complete 350mA driver.

Supplied with box for concrete installation

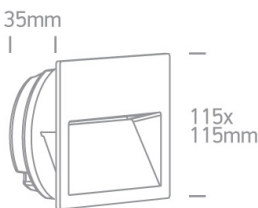
Complies with standard EN60598-1 and any other specific standards.



Downloads



Dimensions






Physical Specification

|                    |   |
|--------------------|---|
| Product Type       | Gear                                      |
| Item Group         | 19 Wall Recessed & Inground               |
| Family             | Outdoor Dark Light Wall Recessed Die cast |
| Order Code         | 68068A/AN/W                               |
| Colour             | Anthracite                                |
| Material           | Die Cast                                  |
| Shape              | Rectangular                               |
| Length             | 115mm                                     |
| Width              | 115mm                                     |
| Height             | 35mm                                      |
| Cutout Hole Width  | 110mm for Concrete                        |
| Cutout Hole Length | 110mm for Concrete                        |



|                      |                  |
|----------------------|------------------|
| Cutout Hole Diameter | 100mm for Gypsum |
| Recessed wall        | Yes              |
| Depth Required       | 60mm             |
| Indoor               | Yes              |
| Outdoor              | Yes              |
| Adjustable           | No               |

Electrical Characteristics

|                  |   |
|------------------|---|
| Gear             | Built In  |
| Fitting + Driver |   |
| Input Voltage    | 100-240V  |
| 50 Hz            | Yes   |
| 60 Hz            | Yes   |
| Safety Class     |  |
| Power(Watts)     | 3W  |
| IP Rating        | IP65  |
| Light Source     | LED built in  |
| Dimmable         | No  |
| F Mark           |  |

|               |   |
|---------------|---|
| Fitting       |   |
| Input Type    | Constant Current  |
| Input Current | 350mA   |
| Voltage       | 8V  |
| Safety Class  |  |
| Power(Watts)  | 2,8W  |
| IP Rating     | IP65  |
| Light Source  | LED built in  |
| LED Type      | SMD 2835  |
| LED Brand     | Edison  |

|                  |
|------------------|
| LED Number       |
| F Mark           |
|                  |
| Gear             |
|                  |
| Gear Type        |
| Input Voltage    |
| 50 Hz            |
| 60 Hz            |
| Power(Watts)     |
| Power Factor     |
| Constant Current |
| 350mA            |
| IP Rating        |
| Safety Class     |
| Manufacturer     |
| Protection       |

|   |
|---|
| 6   |
|    |
|   |
|   |
| Led Driver  |
| 100-240V  |
| Yes   |
| Yes   |
| 1-4W  |
| 0,5   |
| Yes   |
| 3-10V   |
| IP20  |
|  |
| Galoppato   |
| 0   |

Illumination Data

|                      |
|----------------------|
| Colour Temperature   |
| Lumen Output         |
| Light Efficiency     |
| CRI                  |
| Illumination Diagram |
| Dark Light           |

|   |
|---|
| 3000K   |
| 300lm   |
| 100lm/W   |
| 80  |
|  |
| Yes   |

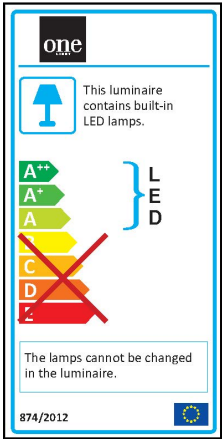
Packing Info

|            |
|------------|
| Box Length |
| Box Width  |
| Box Height |
| Box Weight |

|       |
|-------|
| 13cm  |
| 7,5cm |
| 13cm  |
| 0,4Kg |

|            |               |
|------------|---------------|
| Pcs/Carton | 24            |
| Barcode    | 5291889049531 |
| HS Code    | 9405409900    |

Energy Label



Certification & Warranty

|               |         |
|---------------|---------|
| Warranty      | 2 Years |
| Wee Directive | Yes     |