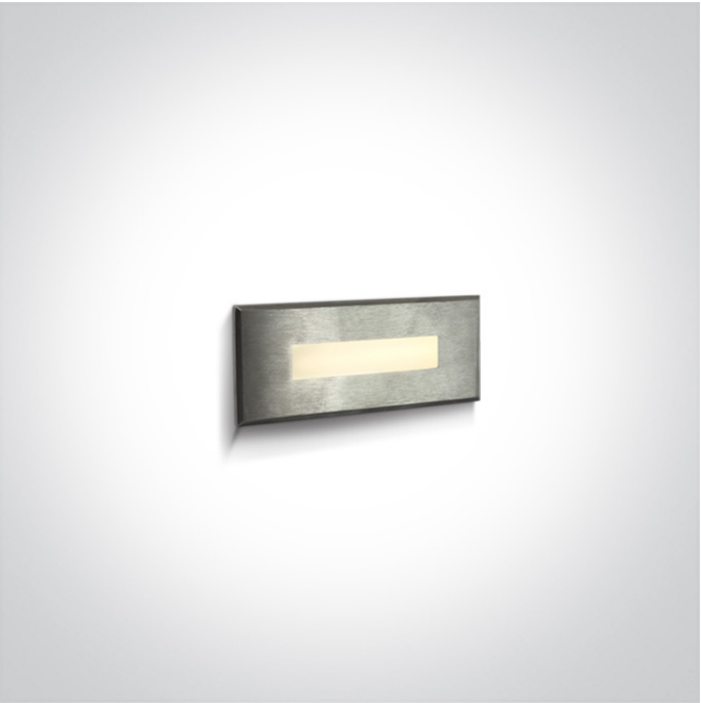




19 Wall Recessed & Inground>Wall Recessed Pro Range

68072A/W



5W LED wall recessed light, IP65, ideal for both indoor and outdoor installation.

Complete 350mA driver.

Supplied with box for concrete installation

Complies with standard EN60598-1 and any other specific standards.



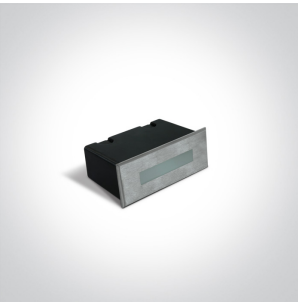
Downloads



Dimensions



Gallery






Physical Specification

Item Group	19 Wall Recessed & Inground
Family	Wall Recessed Pro Range
Order Code	68072A/W
Colour	Stainless Steel
Material	Stainless Steel 316
Diffuser Material	Glass
Shape	Rectangular

Length	120mm
Width	48mm
Height	67mm
Cutout Hole Width	112mm
Cutout Hole Length	42mm
Recessed wall	Yes
Depth Required	75mm
Indoor	Yes
Outdoor	Yes
IK Rating	8

Electrical Characteristics

Gear	Built In
Fitting + Driver	
Input Voltage	220-240V
50 Hz	Yes
60 Hz	Yes
Safety Class	
Power(Watts)	5W
IP Rating	IP65
Light Source	LED built in
Dimmable	No
F Mark	


Fitting	
Input Type	Constant Current
Input Current	350mA
Voltage	12V
Safety Class	
Power(Watts)	4,2W

IP Rating
Light Source
LED Type
LED Brand
F Mark

IP65
LED built in
SMD 2835
Osram


Gear

Gear Type
Input Voltage
50 Hz
60 Hz
Power(Watts)
Power Factor
Constant Current
350mA
IP Rating
Safety Class
Housing Material
Brand
Protection

Led Driver
220-240V
Yes
Yes
1-4W
0,5
Yes
3-12V
IP20

Plastic
Eaglerise
0

Illumination Data

Colour Temperature
Lumen Output
Light Efficiency
CRI
Illumination Diagram

3000K
100lm
20lm/W
80

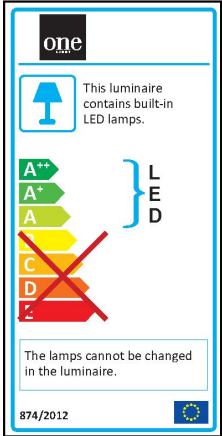

Packing Info

Box Length
------------

9,5cm
-------

Box Width	5,5cm
Box Height	15cm
Pcs/Carton	24
Barcode	5291889057758
HS Code	9405409900

Energy Label



Certification & Warranty

Warranty	2 Years
Weee Directive	Yes