

19 Wall Recessed & Inground>The COB Honeycomb Range

69052/C



3W COB LED inground with honeycomb, IP67.

Requires 24V driver.

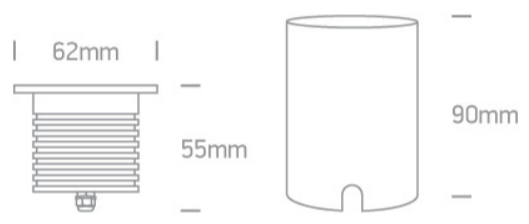
Complies with standard EN60598-1 and any other specific standards.



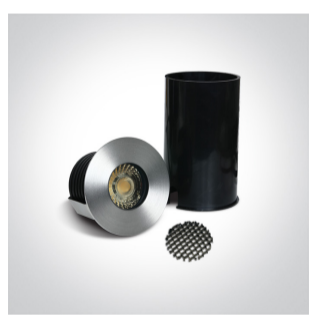
Downloads



Dimensions



Gallery



Must be ordered separately





89015V

Physical Specification

Item Group	19 Wall Recessed & Inground
Family	The COB Honeycomb Range
Order Code	69052/C
Colour	Stainless Steel
Material	Stainless Steel 316
Diffuser Material	Glass
Shape	Circular
Height	55mm
Diameter	62mm
Cutout Hole Diameter	52mm
Inground	Yes
Depth Required	100mm + 300mm drainage
Indoor	Yes
Outdoor	Yes
IK Rating	8

Electrical Characteristics

Fitting

Input Type	Constant Voltage
Input Voltage	24V DC
Safety Class	
Power(Watts)	3W
IP Rating	IP67
Light Source	LED built in
LED Type	COB
LED Brand	Prolight
Cable Length	200cm
F Mark	

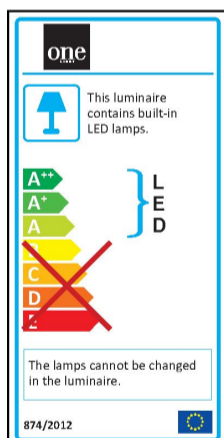
Illumination Data

Colour Temperature	4000K
Lumen Output	240lm
Light Efficiency	80lm/W
CRI	80
Beam Angle	36°
Illumination Diagram	

Packing Info

Box Length	8cm
Box Width	10,5cm
Box Height	8cm
Pcs/Carton	50
Barcode	5291889065715
HS Code	9405409900

Energy Label



Warranty

2 Years

Weee Directive

Yes
