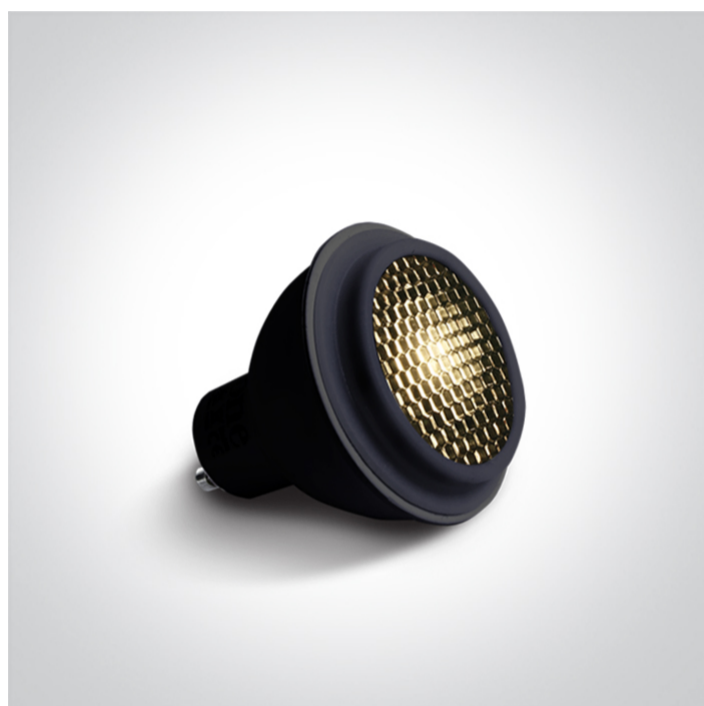


New 2021 Edition 3>Lamps

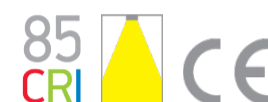
7306CHG/W



MR16 COB LED GU10 6W 230V AC lamp with honeycomb.

Suitable for residential and commercial applications.

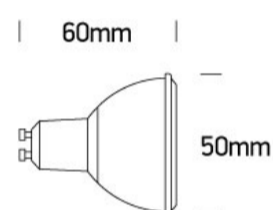
Complies with standard EN62560 and any other specific standards.



Downloads



Dimensions



Physical Specification


Item Group	New 2021 Edition 3
Family	Lamps
Order Code	7306CHG/W
Shape	Circular
Height	60mm
Diameter	50mm

Electrical Characteristics

Gear	No
Lamp	
Input Type	Mains Voltage

Input Voltage	220-240V
50 Hz	Yes
60 Hz	Yes
Power(Watts)	6W
Lamp Type	LED
Lamp Holder	GU10
LED Type	COB
LED Brand	Sanan
Dimmable	No

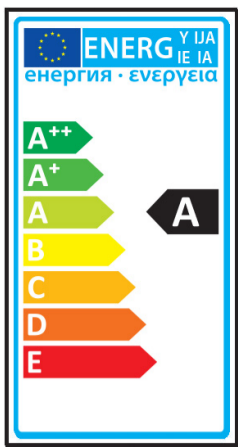
Illumination Data

Colour Temperature	3000K
Lumen Output	300lm
Light Efficiency	50lm/W
CRI	85
Beam Angle	60°
Illumination Diagram	

Packing Info

Box Length	5,1cm
Box Width	5,1cm
Box Height	6,2cm
Pcs/Carton	100
Barcode	5291889070580
HS Code	8539500000

Energy Label



Energy Consumption

6kWh/1000h

Certification & Warranty

Warranty

3 Years

Average Lifetime

25000hrs

Switching Cycles

15000

Weee Directive

Yes
