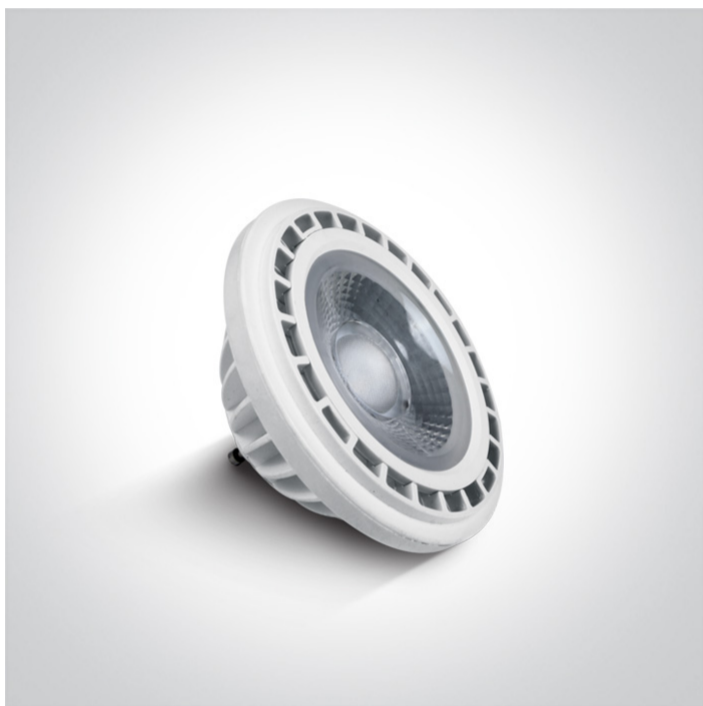




25 Lamps>Dimmable R111 GU10

7315GD/W/45



Triac Dimmable R111 SMD LED GU10 15W 230V AC lamp.

Suitable for residential and commercial applications.

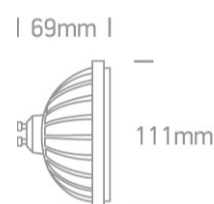
Complies with standard EN62560 and any other specific standards.



Downloads



Dimensions



Physical Specification


Item Group	25 Lamps
Family	Dimmable R111 GU10
Order Code	7315GD/W/45
Shape	Circular
Height	69mm
Diameter	111mm

Electrical Characteristics

Gear	No
Lamp	
Input Type	Mains Voltage

Input Voltage	220-240V
50 Hz	Yes
60 Hz	Yes
Power(Watts)	15W
Lamp Type	LED
Lamp Holder	GU10
LED Type	SMD 2835
LED Brand	Epistar
Dimmable	Yes
Dimmer type	Triac

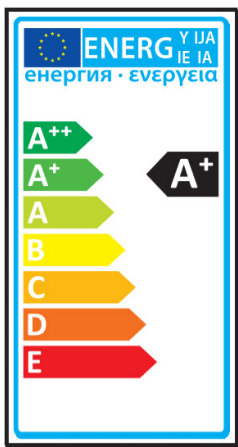
#### Illumination Data

Colour Temperature	3000K
Lumen Output	1200lm
Light Efficiency	80lm/W
CRI	80
Beam Angle	45°
Illumination Diagram	

#### Packing Info

Box Length	11,5cm
Box Width	9cm
Box Height	9cm
Box Weight	0,270Kg
Pcs/Carton	20
Barcode	5291889041771
HS Code	8539500000

#### Energy Label



---

Energy Consumption

15kWh/1000h

---

### Certification & Warranty

---

Warranty

2 Years

---

---

Average Lifetime

50000hrs

---

---

Switching Cycles

15000

---

---

Weee Directive

Yes

---