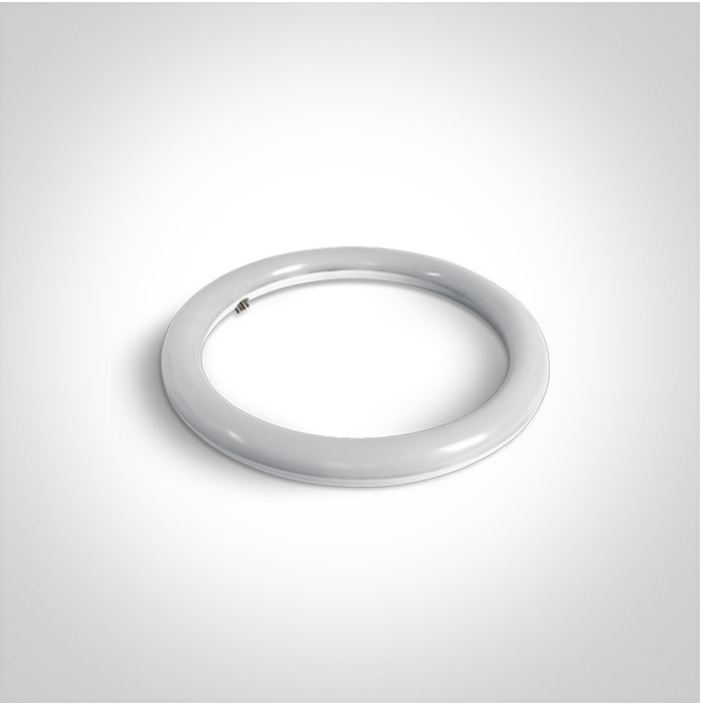




25 Lamps>T9C LED

9940L/W



20W G10Q T9 LED Lamp.

Suitable for residential and commercial applications.

Complies with standard EN62560 and any other specific standards.



Downloads



Dimensions



Physical Specification

Item Group	25 Lamps
Family	T9C LED
Order Code	9940L/W
Shape	Circular
Diameter	375mm

Electrical Characteristics

Gear	No
Lamp	
Input Type	Mains Voltage
Input Voltage	220-240V

50 Hz
60 Hz
Power(Watts)
Lamp Type
Lamp Holder
LED Type
LED Brand
Dimmable

Yes
Yes
20W
LED
G10Q
SMD
Sanan
No

Illumination Data

Colour Temperature
Lumen Output
Light Efficiency
CRI
Illumination Diagram

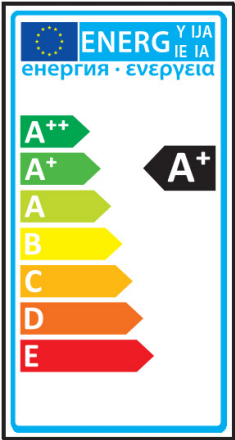
3000K
1800lm
90lm/W
80


Packing Info

Box Weight
Pcs/Carton
Barcode
HS Code

0,35Kg
10
5291889054016
8539500000

Energy Label



Energy Consumption

20kWh/1000h

Certification & Warranty

Warranty	2 Years
Average Lifetime	45000hrs
Switching Cycles	20000
Weee Directive	Yes