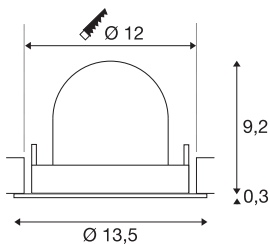




NUMINOS® GIMBLE M

black recessed ceiling light, 2700K 55°

The NUMINOS light system from SLV skilfully combines function, design and technology. This way, you can experience a thousand lighting design possibilities with different downlights and spotlights. Also with the NUMINOS® GIMBLE M recessed ceiling light, which convinces with the best workmanship and lighting quality. Ideal for discreet, modern and space-saving lighting that directs the accent to objects or the room. This means that easy installation is a mere formality. When to choose NUMINOS from SLV – modular diversity awaits you.



TECHNICAL DATA

| | |
|-------------------------------------|-------------|
| Item no.: | 1005927 |
| Number of different light outlets | 1 |
| Secondary power / secondary voltage | 500mA |
| Height | 9.5 cm |
| Diameter | 13.5 cm |
| Installation diameter | 12 cm |
| Installation depth | 9.5 cm |
| Net weight | 0.42 kg |
| Gross weight | 0.449 kg |
| Safety class | III |
| Assembly | Recessed |
| Assembly details | Ceiling |
| Wattage | 17.5 W |
| Lumen | 1460 lm |
| Colour temperature | 2700 Kelvin |
| Beam angle | 55 ° |
| Color | black |
| CRI | 90 |
| UGR ≤ | 22 |
| BIG WHITE Page | 53 |



Light Source

| | |
|--------|---|
| 791800 |  |
|--------|---|

Accessories

| | |
|---------|--|
| 1004054 | LED driver , 20W 500mA PHASE |
| 1004064 | LED driver , 21-29.5W 500/600/700mA |
| 1004069 | LED driver , 29W 500mA |
| 1004790 | NUMINOS® M , diffuser Ellipse |
| 1004791 | NUMINOS® M , diffuser Prisma |
| 1004792 | NUMINOS® M , diffuser Frosted |
| 1004793 | NUMINOS® M , diffuser Wabe |
| 1006143 | Numinos® M Mounting Frame , round 240/120mm black |
| 1006144 | Numinos® M Mounting Frame , round 240/120mm white |
| 1006145 | Numinos® M Mounting Frame , square 240/120mm black |
| 1006146 | Numinos® M Mounting Frame , square 240/120mm white |

