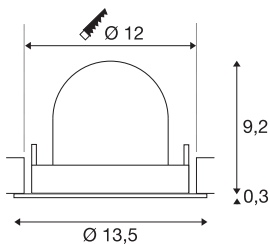




NUMINOS® GIMBLE M

black recessed ceiling light, 3000K 40°

NUMINOS is the best possible coordinated light system from SLV that combines function, design and technology. The various downlights and spotlights make a thousand lighting design options possible. Also with the NUMINOS® GIMBLE M recessed ceiling light, which convinces with the best workmanship and lighting quality. In this way, you can create unobtrusive, modern and space-saving lighting that draws the focus to objects or the room. This means that easy installation is a mere formality. When will you choose SLV's modular variety?



TECHNICAL DATA

Item no.:	1005942
Number of different light outlets	1
Secondary power / secondary voltage	500mA
Height	9.5 cm
Diameter	13.5 cm
Installation diameter	12 cm
Installation depth	9.5 cm
Net weight	0.42 kg
Gross weight	0.449 kg
Safety class	III
Assembly	Recessed
Assembly details	Ceiling
Wattage	17.5 W
Lumen	1500 lm
Colour temperature	3000 Kelvin
Beam angle	40 °
Color	black
CRI	90
UGR ≤	22
BIG WHITE Page	53



Light Source

791822	
--------	---

Accessories

1004054	LED driver , 20W 500mA PHASE
1004064	LED driver , 21-29.5W 500/600/700mA
1004069	LED driver , 29W 500mA
1004790	NUMINOS® M , diffuser Ellipse
1004791	NUMINOS® M , diffuser Prisma
1004792	NUMINOS® M , diffuser Frosted
1004793	NUMINOS® M , diffuser Wabe
1006143	Numinos® M Mounting Frame , round 240/120mm black
1006144	Numinos® M Mounting Frame , round 240/120mm white
1006145	Numinos® M Mounting Frame , square 240/120mm black
1006146	Numinos® M Mounting Frame , square 240/120mm white

