

Accent[®] Q

HERBICIDE

Control foxtails & fall panicum in seed corn, sweet corn and popcorn production



DuPont™ Accent[®] Q herbicide delivers:

- Selective postemergence contact control of the toughest grass and broadleaf weeds.
- Flexibility to apply under more diverse weather conditions and across more seed corn in-breds, sweet corn hybrids and popcorn varieties with a wider range of adjuvants.

Rate recommendation:

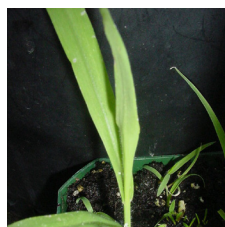
Accent Q 0.7 – 0.9 oz/A
(20 – 25 acres per bottle)

The addition of a non-ionic surfactant, crop oil concentrate or methylated seed oil, and ammonium nitrogen fertilizer is required.

If another herbicide is tank mixed with Accent Q, select adjuvants authorized for use with both products.



Foxtail



Fall panicum

Application information:

- Accent[®] Q is labeled for use in seed corn or popcorn less than 20 inches tall, or that exhibits up to and including 5-leaf collars (V5), whichever is most restrictive. Best results are obtained when applications are made early postemergence when corn is less than 12 inches tall and weeds are small.
- Accent Q may be applied to certain sweet corn hybrids grown for fresh markets or under contract for processing. Applications of Accent Q may be applied broadcast or with drop nozzles (post-directed) on sweet corn up to 12 inches tall or up to and including 5-leaf collars (V5). For sweet corn 12 to 18 inches tall, apply only with drop nozzles. Do not apply to sweet corn taller than 18 inches or those that exhibit 6 or more leaf collars (V6), and make only one application of Accent Q per year.
- Accent Q is rainfast in 1 hour.
- Use a minimum of 15 gallons of water for best performance.

Weed Spectrum

Grasses		Broadleaves	
C Barnyardgrass	C Shattercane	C Burcucumber	
C Broadleaf signalgrass	C Sorghum alnum	C Dandelion	
C Foxtails, <i>bristly, giant, green, yellow</i>	C Timothy	S Hemp dogbane	
C Itchgrass	C Volunteer cereals <i>barley, oats, rye, triticale, wheat</i>	C Jimsonweed	
C Johnsongrass	C Wild oats	C Morningglory, <i>ivyleaf, pitted</i>	
C Panicum, <i>browntop, fall, Texas</i>	C Wild proso millet	C Pigweed <i>redroot, smooth</i>	
C Quackgrass*	C Wirestem muhly*	S Pokeweed	
C Ryegrass, <i>Italian, perennial</i>	C Witchgrass	C Smartweeds, <i>ladysthumb, PA</i>	
C Sandbur, <i>field, longspine</i>	C Woolly Cupgrass*	S Thistle, <i>Canada</i>	

C - Control **S** - Suppressed

* Requires the use of COC plus ammonium nitrogen fertilizer.

Cultivation or re-treatment may be required. See label for full details.

Visit us at corteva.us

®™ Trademark of Dow AgroSciences, DuPont or Pioneer and their affiliated companies or respective owners.

This reference guide is not intended as a substitute for the product label for the product(s) referenced herein. Product labels for the above product(s) contain important precautions, directions for use, and product warranty and liability limitations, which must be read before using the product(s). Applicators must be in possession of the product label(s) at the time of application. Always read and follow all label direction and precautions for use when using any pesticide alone or in tank-mix combinations.

DuPont™ Accent[®] Q is not registered for sale or use in all states. Contact your state pesticide regulatory agency to determine if a product is registered for sale or use in your state. Always read and follow label directions. ©2020 Corteva. CA01-617-021 COR (6/20)