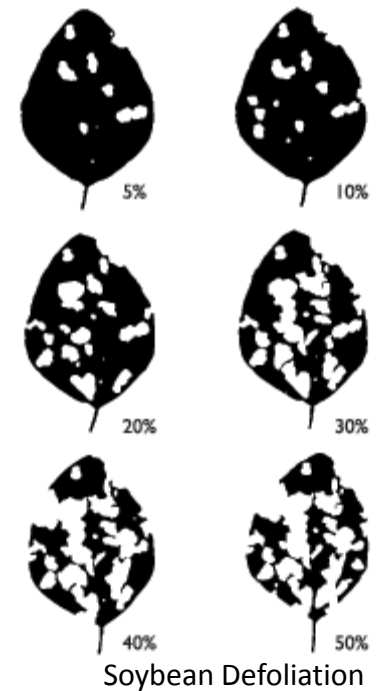


2011 Insect Threshold Table		
Insect	Crop	Economic Threshold
Black Cutworm	Corn	1-2% cutting below or above ground
Brown Stinkbug	Corn	1 or more/ft. of row
Green Stinkbug	Soybeans	1 or more/ft. of row
Japanese Beetle	Corn	3 beetles/ear are present during green silk period and poll. is not comp
	Soybeans	30% defoliation before bloom/20% between bloom and pod fill
Aphids	Soybeans	250 per plant @ R1-R5
Chinch Bug	Corn	>10 per 3" plant >50 per 12" plant
Western Bean Cutworm	Corn	<8% plants infested - 95% tasseled
Corn Earworm(soybean podworm)	Soybeans	1 or more/ft. of row
Bean Leaf Beetle	Soybeans	>40 defoliation @ V stages, >15-25% defoliation @ R1-R6
Fall Armyworm	Corn	>75% of plants with feeding at whorl stage
Green Cloverworm	Soybeans	>20% defoliation and 12 or more larvae/ft. of row
European Corn Borer	Corn	1 larvae per plant
True Armyworm	Corn	>50% of plants with feeding
Western Corn Rootworm Beetle	Corn	1 per plant, clipping @ 25-50% pollen shed
Alfalfa Weevil	Alfalfa	3-5 per stem, 30% plant fed on before cut, 50% crowns fed on
Bird Cherry Oat Aphid	Wheat	7-15 per plant
Greenbug	Wheat	25-50 per ft. of row from emergence to joint
True Armyworm	Wheat	4 per sq. ft or 2-3% head cutting



Soybean Pest ID





5%



10%



20%



30%



40%



50%



Green Cloverworm



Soybean Looper



Soybean Podworm

Corn Pest ID



Corn Earworm



Western Bean Cutworm

Fall Armyworm Identification

Broad, pale band along top of body, contrasted by dark striping at the sides

Eighth abdominal segment with four dark spots

Head with dark net-like pattern and upside-down, white "Y" marking

Fall Armyworm



Western Corn Rootworm



European Corn Borer

Armyworm Identification

Body sleek with small head

Broad, dark band along the top of the body

Brown net-like pattern and dark arcs on head

Body mottled and variable in color from brownish to dark green, with alternating and contrasting stripes

True Armyworm



Southern Corn Rootworm



Northern Corn Rootworm



Brown Stinkbug



Chinch Bug